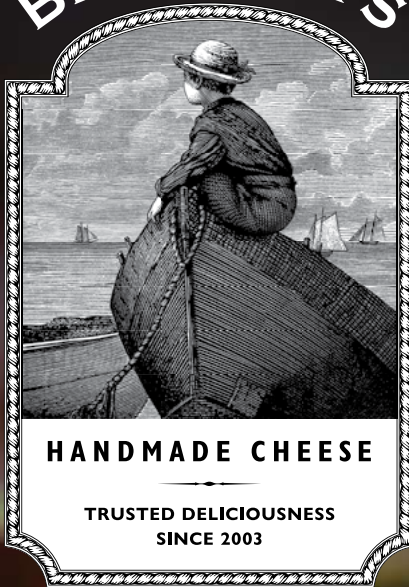


BEECHER'S



WHOLESALE CATALOG

2024-2025



CONTENTS

- 1 INTRODUCTION
- 3 CHEESE
- 33 CRACKERS
- 38 FROZEN ENTRÉES + SIDES
- 63 SOUPS
- 74 PRODUCT INDEX

PRODUCED DECEMBER 2024

BEECHER'S HANDMADE CHEESE
1725 Westlake Ave N, Suite 200; Seattle, WA 98109
wholesale@beecherscheese.com

📍 @BEECHERSCHEESE | [WHOLESALE.BEECHERSCHEESE.COM](https://www.wholesale.beecherscheese.com)



TRUSTED DELICIOUSNESS SINCE 2003

For over 20 years, Beecher's has delighted in helping you create remarkable moments around your table, every day.



We are steadfast in our commitment to earn and keep your trust—here's how:

- We use only the best ingredients.
- We have a high bar for deliciousness.
- We operate as a good corporate citizen, creating value for customers, employees, and partners.

A portion of all Beecher's sales goes to support efforts that matter to us most:

PURE FOOD COMMITMENT For over 20 years, Beecher's has invested over \$4 million into The Beecher's Foundation, equipping over 250,000 kids to decode food packaging and marketing messages so they can make informed food choices for life.

PLASTIC WASTE While our options for non-plastic food packaging remain limited, Beecher's donates a portion of sales to non-profit organizations dedicated to cleaning up the world's plastic waste.





TWO DAYS AGO, THIS CHEESE WAS GRASS

With our Pike Place Market cheesemaking kitchen surrounded by glass, visitors witness first hand the transformation of a vat of creamy milk into one of Beecher's award-winning cheeses. Although the cheesemaker is aided only by simple machinery, our artisan cheeses are crafted applying the same techniques that have been used for 5,000 years.

Seven days a week, fresh milk is pumped into the holding tanks at our cheesemaking kitchens. Then the day-long process of cheesemaking begins. Under the skilled direction of the cheesemaker (and with a little help from the cows), the end result is a wholesome, natural, pure cheese—full of flavor and high in nutrition.



IMAGES, TOP TO BOTTOM After the cheesemaker has cut the curds to release the whey, the curds are cut again and stacked into loaves. The loaves are then run through a curd cutting mill, creating uniform curds that are scooped into hoops before being set aside for aging.

OUR CREDO

Flavor and purity go hand in hand at Beecher's. The artisan cheeses we sell, and the meats, vegetables and other ingredients we use to make Beecher's café and restaurant deliciousness, are chosen with care and a desire to support broadly local, small-scale enterprises that share our philosophy and commitment to pure food. The Beecher's Credo says it best:

Beecher's Handmade Cheese makes foods only with ingredients we trust, are proud of, and would eat ourselves. It's just authentic and original food, full of flavor.



That means all our products—from our signature Flagship cheese to our line of crackers, entrées, side dishes, and soups—do not contain any artificial preservatives, flavor enhancers or coloring agents, and the premium milk used to produce them contains no added rBST.

CHEESE





FLAGSHIP CHEESE

Fifteen months of aging nurtures Flagship's uniquely robust, nutty flavor to crowd-pleasing perfection. With hints of caramel and browned butter, this semi-hard, pasteurized cheese is balanced, dense and creamy with a light crumble.

Also available as Sticks (page 27).



AWARDS

2022, 2019 American Cheese Society, Second Place

2019 World Cheese Awards, Bronze

40 LB BLOCK

ITEM CODE: 200000

CASE GTIN: 90782045112353

UNITS/CASE: One (1) 40 lb. block

CASE GROSS WEIGHT: 42 lb.

5 LB LOAF

For more information, contact wholesale@beecherscheese.com.

SERVING SUGGESTIONS

Flagship delights as much on an artisan cheese plate as it does in omelettes, salads, soups and pastas. As “wine’s best friend” it pairs well with virtually any glass of red or white; try it on crostini with a savory fruit compote, and enjoy with a glass of Syrah, Pouilly-Fuissé, or a pint of IPA.

Nutrition Facts

Servings: varied

Serv. Size: 1oz (28g)

Calories 120
per serving

Amount/Serving	%DV*	Amount/Serving	%DV*
Total Fat 10g	13%	Total Carb. 1g	0%
Sat. Fat 7g	35%	Dietary Fiber 0g	0%
Trans Fat 0g		Total Sugars 0g	
Cholest. 30mg	10%	Incl. Og Added Sugars	0%
Sodium 170mg	7%	Protein 6g	

Vitamin D 0% • Calcium 15%
Iron 0% • Potassium 0%

*The % Daily Value (DV) tells you how much a nutrient in a serving of food contributes to a daily diet. 2,000 calories a day is used for general nutrition advice.

INGREDIENTS: Pasteurized milk, salt, culture, enzymes.

CONTAINS: Milk.



3.75 OZ EXACT WEIGHT TRIANGLE

UPC CODE: 7-82045-10036-4

ITEM CODE: 10036 CASE GTIN: 10782045100361

UNIT DIMENSIONS: 5" x 1" x 2.5"

CASE DIMENSIONS: 7.5" x 4.25" x 4"

UNITS/CASE: Twelve (12) 3.75 oz. pieces

CASE CUBE: 0.074 ft³ CASE GROSS WEIGHT: 3 lb.

CASES/PALLET: 583 TI-HI: 53' x 11'



6 OZ EXACT WEIGHT TRIANGLE

UPC CODE: 7-82045-10024-1

ITEM CODE: 10024 CASE GTIN: 10782045100248

UNIT DIMENSIONS: 4.5" x 1.875" x 2.5"

CASE DIMENSIONS: 9" x 8" x 3.88"

UNITS/CASE: Sixteen (16) 6 oz. pieces

CASE CUBE: 0.162 ft³ CASE GROSS WEIGHT: 6.5 lb.

CASES/PALLET: 240 TI-HI: 20' x 12'



6-8 OZ RANDOM WEIGHT TRIANGLE

For more information, contact
wholesale@becherscheese.com.

EXTRA-AGED FLAGSHIP CHEESE

Richer and nuttier than its younger counterpart, Extra-Aged Flagship is matured for at least 4 years, amplifying the strong notes of sweet fruit and browned butter that melt in your mouth with layers of flavor.



AWARDS

2024, 2015 American Cheese Society,
First Place

2019 American Cheese Society,
Third Place

40 LB BLOCK

ITEM CODE: 200027

CASE GTIN: 90782045113398

UNITS/CASE: One (1) 40 lb. block

CASE GROSS WEIGHT: 42 lb.

5 LB LOAF

For more information, contact
wholesale@beecherscheese.com.

SERVING SUGGESTIONS

Layer onto a slice of ripe pear, or plate with dried dates and walnuts and enjoy with a glass of Cabernet Sauvignon.

Nutrition Facts

Servings: varied
Serv. Size: 1 oz (28g)

Calories 120
per serving

Amount/Serving	%DV*	Amount/Serving	%DV*
Total Fat 10g	13%	Total Carb. 1g	0%
Sat. Fat 7g	35%	Dietary Fiber 0g	0%
Trans Fat 0g		Total Sugars 0g	
Cholest. 30mg	10%	Incl. 0g Added Sugars	0%
Sodium 170mg	7%	Protein 6g	

Vitamin D 0% • Calcium 15%
Iron 0% • Potassium 0%

*The % Daily Value (DV) tells you how much a nutrient in a serving of food contributes to a daily diet. 2,000 calories a day is used for general nutrition advice.

INGREDIENTS: Pasteurized milk, salt, culture, enzymes.

CONTAINS: Milk.

6-8 OZ RANDOM WEIGHT TRIANGLE

For more information, contact
wholesale@beecherscheese.com.

SMOKED FLAGSHIP CHEESE

After 15 months of aging, Smoked Flagship is naturally cold smoked over a distinctive blend of apple and cherry wood, resulting in Flagship's signature robust and nutty flavor infused with the heady, fruity essence of natural hardwood smoke.



AWARDS

2015 American Cheese Society,
First Place

40 LB BLOCK

ITEM CODE: 11298

CASE GTIN: 90782045112988

UNITS/CASE: One (1) 40 lb. block

CASE GROSS WEIGHT: 42 lb.

5 LB LOAF

For more information, contact
wholesale@beecherscheese.com.

SERVING SUGGESTIONS

Layer and melt onto a turkey sandwich, or shred with our Just Jack cheese to create a creamy, smoky fondue. Pair with a glass of Syrah or Zinfandel.

Nutrition Facts

Amount/Serving	%DV*	Amount/Serving	%DV*
Total Fat 10g	13%	Total Carb. 1g	0%
Sat. Fat 7g	35%	Dietary Fiber 0g	0%
Trans Fat 0g		Total Sugars 0g	
Cholest. 30mg	10%	Incl. Og Added Sugars 0%	
Sodium 170mg	7%	Protein 6g	
Calories 120			
Vitamin D 0% • Calcium 15%		Iron 0% • Potassium 0%	

Servings: varied
Serv. Size: 1 oz (28g)

*The % Daily Value (DV) tells you how much a nutrient in a serving of food contributes to a daily diet. 2,000 calories a day is used for general nutrition advice.

INGREDIENTS: Pasteurized milk, salt, culture, enzymes.

CONTAINS: Milk.

6-8 OZ RANDOM WEIGHT TRIANGLE

For more information, contact
wholesale@beecherscheese.com.



MARCO POLO CHEESE

As adventurous as its namesake, Marco Polo blends lightly-milled green and black peppercorns to create a bold, creamy cow's milk cheese with savory umami and butter notes.

Also available as Sticks (p.28).



AWARDS

- 2008 American Cheese Society, First Place
- 2007 World Cheese Awards, Gold
- 2005 World Cheese Awards, Bronze

40 LB BLOCK

ITEM CODE: 400001
 CASE GTIN: 90782045112339
 UNITS/CASE: One (1) 40 lb. block
 CASE GROSS WEIGHT: 42 lb.

5 LB LOAF

For more information, contact wholesale@beecherscheese.com.

SERVING SUGGESTIONS

Enjoy in a sandwich and wrap, or melt onto burgers or a baked potato. For extra gooey goodness, use it in place of shredded cheese in lasagnas, casseroles, or scrambled eggs.

Nutrition Facts

Servings: varied

Serv. Size: 1oz (28g)

Calories 120
per serving

Amount/Serving	%DV*	Amount/Serving	%DV*
Total Fat 10g	13%	Total Carb. 1g	0%
Sat. Fat 7g	35%	Dietary Fiber 0g	0%
Trans Fat 0g		Total Sugars 0g	
Cholest. 30mg	10%	Incl. 0g Added Sugars	0%
Sodium 170mg	7%	Protein 6g	

Vitamin D 0% • Calcium 15%
Iron 0% • Potassium 0%

*The % Daily Value (DV) tells you how much a nutrient in a serving of food contributes to a daily diet. 2,000 calories a day is used for general nutrition advice.

INGREDIENTS: Pasteurized milk, salt, pepper, culture, enzymes.

CONTAINS: Milk.



3.75 OZ EXACT WEIGHT TRIANGLE

UPC CODE: 7-82045-10037-1

ITEM CODE: 10037 CASE GTIN: 10782045100378

UNIT DIMENSIONS: 5" x 1" x 2.5"

CASE DIMENSIONS: 7.5" x 4.25" x 4"

UNITS/CASE: Twelve (12) 3.75 oz. pieces

CASE CUBE: 0.074 ft³ CASE GROSS WEIGHT: 3 lb.

CASES/PALLET: 583 TI-HI: 53' x 11'



6 OZ EXACT WEIGHT TRIANGLE

UPC CODE: 7-82045-10026-5

ITEM CODE: 10026 CASE GTIN: 10782045100262

UNIT DIMENSIONS: 4.5" x 1.875" x 2.5"

CASE DIMENSIONS: 9" x 8" x 3.88"

UNITS/CASE: Sixteen (16) 6 oz. pieces

CASE CUBE: 0.162 ft³ CASE GROSS WEIGHT: 6.5 lb.

CASES/PALLET: 240 TI-HI: 23' x 12'



6-8 OZ RANDOM WEIGHT TRIANGLE

For more information, contact
wholesale@beecherscheese.com.

JERK SPICE CHEESE

The complex, smoky flavor of Jamaican jerk spices combines with the creamy texture of our semi-hard, pasteurized cow's milk cheese to create an earthy, savory bite—just as delicious melted into your favorite dish as it is on a cheese plate.



40 LB BLOCK

ITEM CODE: 11251
CASE GTIN: 90782045112513
UNITS/CASE: One (1) 40 lb. block
CASE GROSS WEIGHT: 42 lb.

5 LB LOAF

For more information, contact
wholesale@beecherscheese.com.

SERVING SUGGESTIONS

Melt onto a shaved pork sandwich, combine on a pizza with chicken and basil, or plate with pickled green beans. Enjoy with a glass of Zinfandel or a pint of Spiced Ale or Hefeweizen.

Nutrition Facts

Amount/Serving	%DV*	Amount/Serving	%DV*
Total Fat 10g	13%	Total Carb. 1g	0%
Sat. Fat 7g	35%	Dietary Fiber 0g	0%
Trans Fat 0g		Total Sugars 0g	
Cholest. 30mg	10%	Incl. Og Added Sugars	0%
Sodium 180mg	8%	Protein 6g	

Servings: varied
Serv. Size: 1oz (28g)

Calories 120
per serving

Vitamin D 0% • Calcium 15%
Iron 0% • Potassium 1%

*The % Daily Value (DV) tells you how much a nutrient in a serving of food contributes to a daily diet. 2,000 calories a day is used for general nutrition advice.

INGREDIENTS: Pasteurized milk, salt, Jamaican jerk seasoning (cane sugar, onion, salt, allspice, chili pepper, thyme, black pepper, nutmeg, cinnamon, bay leaf), culture, enzymes.

CONTAINS: Milk.



3.75 OZ EXACT WEIGHT TRIANGLE

UPC CODE: 7-82045-10038-8

ITEM CODE: 10038 CASE GTIN: 10782045100385

UNIT DIMENSIONS: 5" x 1" x 2.5"

CASE DIMENSIONS: 7.5" x 4.25" x 4"

UNITS/CASE: Twelve (12) 3.75 oz. pieces

CASE CUBE: 0.074 ft³ CASE GROSS WEIGHT: 3 lb.

CASES/PALLET: 583 TI-HI: 53' x 11'



6 OZ EXACT WEIGHT TRIANGLE

UPC CODE: 7-82045-10027-2

ITEM CODE: 10027 CASE GTIN: 10782045100279

UNIT DIMENSIONS: 4.5" x 1.875" x 2.5"

CASE DIMENSIONS: 9" x 8" x 3.88"

UNITS/CASE: Sixteen (16) 6 oz. pieces

CASE CUBE: 0.162 ft³ CASE GROSS WEIGHT: 6.5 lb.

CASES/PALLET: 240 TI-HI: 20' x 12'



6-8 OZ RANDOM WEIGHT TRIANGLE

For more information, contact
wholesale@beecherscheese.com.



JUST JACK CHEESE

This cheese is anything but “Just” Jack. We make it with pasteurized whole cow’s milk, giving it a buttery texture and the especially rich flavor of pure cream.

Also available as Sticks (p. 30) and Sliced (p. 32).



40 LB BLOCK

ITEM CODE: 300005

CASE GTIN: 90782045112346

UNITS/CASE: One (1) 40 lb. block

CASE GROSS WEIGHT: 42 lb.

5 LB LOAF

For more information, contact
wholesale@beecherscheese.com.

SERVING SUGGESTIONS

Enjoy in a fresh sandwich, a wrap spread with chutney, or melted on a burger. For extra gooey goodness, use it in place of shredded cheese in lasagnas, casseroles, or scrambled eggs.

Nutrition Facts

Amount/Serving	%DV*	Amount/Serving	%DV*
Total Fat 10g	13%	Total Carb. <1g	0%
Sat. Fat 7g	35%	Dietary Fiber 0g	0%
Trans Fat 0g		Total Sugars 0g	
Cholest. 30mg	10%	Incl. 0g Added Sugars	0%
Sodium 170mg	7%	Protein 6g	

Servings: varied

Serv. Size: 1oz (28g)

Calories 120
per serving

Vitamin D 0% • Calcium 15%
Iron 0% • Potassium 0%

*The % Daily Value (DV) tells you how much a nutrient in a serving of food contributes to a daily diet. 2,000 calories a day is used for general nutrition advice.

INGREDIENTS: Pasteurized milk, salt, culture, enzymes.

CONTAINS: Milk.



3.75 OZ EXACT WEIGHT TRIANGLE

UPC CODE: 7-82045-10048-7

ITEM CODE: 10048 CASE GTIN: 10782045100484

UNIT DIMENSIONS: 5" x 1" x 2.5"

CASE DIMENSIONS: 7.5" x 4.25" x 4"

UNITS/CASE: Twelve (12) 3.75 oz. pieces

CASE CUBE: 0.074 ft³ CASE GROSS WEIGHT: 3 lb.

CASES/PALLET: 583 TI-HI: 53' x 11'



6-8 OZ RANDOM WEIGHT TRIANGLE

For more information, contact
wholesale@beecherscheese.com.

HATCH JACK CHEESE

The rich, spicy heat of New Mexico-grown Hatch chiles combines with the creamy texture of a semi-hard, pasteurized cow's milk cheese to deliver a savory bite worth sharing.



40 LB BLOCK

ITEM CODE: 11252

CASE GTIN: 10782045112524

UNITS/CASE: One (1) 40 lb. block

CASE GROSS WEIGHT: 42 lb.

SERVING SUGGESTIONS

Serve on crostinis along with a brush of olive oil and pico de gallo, or layered in a turkey panini. Shred and melt onto crispy hashbrowns, on top of a burger, or in a quesadilla. Pair with a glass of chilled Moscato, Zinfandel or a pint of Porter.

Nutrition Facts

Servings: varied

Serv. Size: 1oz (28g)

Calories 120
per serving

Amount/Serving	%DV*
Total Fat 10g	13%
Sat. Fat 7g	35%
Trans Fat 0g	
Cholest. 30mg	10%
Sodium 170mg	7%

Amount/Serving	%DV*
Total Carb. 1g	0%
Dietary Fiber 0g	0%
Total Sugars 0g	
Incl. Og Added Sugars	0%
Protein 6g	

*The % Daily Value (DV) tells you how much a nutrient in a serving of food contributes to a daily diet. 2,000 calories a day is used for general nutrition advice.

Vitamin D 0% • Calcium 15%
Iron 0% • Potassium 0%

INGREDIENTS: Pasteurized milk, roasted Hatch green chile (New Mexico-grown green chile, lime juice), salt, Hatch green chile powder, cultures, enzymes.

CONTAINS: Milk.



3.75 OZ EXACT WEIGHT TRIANGLE

UPC CODE: 7-82045-10039-5

ITEM CODE: 10039 CASE GTIN: 10782045100392

UNIT DIMENSIONS: 5" x 1" x 2.5"

CASE DIMENSIONS: 7.5" x 4.25" x 4"

UNITS/CASE: Twelve (12) 3.75 oz. pieces

CASE CUBE: 0.074 ft³ CASE GROSS WEIGHT: 3 lb.

CASES/PALLET: 583 TI-HI: 53' x 11'



6-8 OZ RANDOM WEIGHT TRIANGLE

For more information, contact
wholesale@beecherscheese.com.

DULCET CHEESE

This rindless, double-cream, semi-hard cheese is lightly tangy and elegant, and rich with butterfat. We make it with pasteurized Jersey cow's milk for a smooth, indulgent bite.



40 LB BLOCK

ITEM CODE: 300009

CASE GTIN: 90782045113404

UNITS/CASE: One (1) 40 lb. block

CASE GR WT: 42 lb.

5 LB LOAF

For more information, contact wholesale@beecherscheese.com.

SERVING SUGGESTIONS

Pair with fresh strawberries and mint, or melt in a grilled panini with smoked ham and apples.

Nutrition Facts

Servings: varied

Serv. Size: 1 oz (28g)

Calories 120
per serving

Amount/Serving	%DV*	Amount/Serving	%DV*
Total Fat 10g	13%	Total Carb. 1g	0%
Sat. Fat 7g	35%	Dietary Fiber 0g	0%
Trans Fat 0g		Total Sugars 0g	
Cholest. 30mg	10%	Incl. 0g Added Sugars	0%
Sodium 170mg	7%	Protein 6g	

Vitamin D 0% • Calcium 15%
Iron 0% • Potassium 0%

*The % Daily Value (DV) tells you how much a nutrient in a serving of food contributes to a daily diet. 2,000 calories a day is used for general nutrition advice.

INGREDIENTS: Pasteurized milk, pasteurized cream, salt, culture, enzymes.

CONTAINS: Milk.

6-8 OZ RANDOM WEIGHT TRIANGLE

For more information, contact wholesale@beecherscheese.com.

FLAGSHIP RESERVE CLOTHBOUND

Traditionally clothbound and open-air aged for 13+ months, the flavors of Flagship concentrate into a dense texture with butterscotch notes that melt smooth in your mouth.



AWARDS

2024, 2007 American Cheese Society, Best of Show

2024, 2022, 2019, 2017 American Cheese Society, First Place

2024, 2022 World Cheese Awards, Bronze

2024, 2022 World Championship Cheese Contest, Gold

2023, 2018 American Cheese Society, Second Place

16 LB TRUCKLE

ITEM CODE: 200020

CASE GTIN: 90782045112810

UNITS/CASE: One (1) 16 lb. truckle

6-8 OZ RANDOM WT. TRIANGLE

For more information, contact wholesale@beecherscheese.com.



SERVING SUGGESTIONS

Pair with berry compote or a crisp apple, bake in chunks into hot breads, or shred into a roasted vegetable frittata. Enjoy with a glass of Syrah or pint of Brown Ale.

AFFINAGE

This special edition of our signature Flagship is a firm, natural rind, pasteurized cow's milk cheese that is first rubbed with butter and then aged at 47°F and 85% humidity. Each truckle is carefully attended to, consistently brushed and hand-turned throughout its aging. This method results in a 14-16% moisture loss during aging, allowing for a slightly lower moisture and higher salt content, which concentrates the already-rich flavor and produces a long, creamy finish.

Nutrition Facts

Servings: Varied

Serv. Size: 1 oz (28g)

Calories 120
per serving

Amount/Serving	%DV*	Amount/Serving	%DV*
Total Fat 10g	13%	Total Carb. 1g	0%
Sat. Fat 7g	35%	Dietary Fiber 0g	0%
Trans Fat 0g		Total Sugars 0g	
Cholest. 30mg	10%	Incl. Og Added Sugars	0%
Sodium 210mg	9%	Protein 7g	

Vitamin D 0% • Calcium 20%
Iron 0% • Potassium 0%

*The % Daily Value (DV) tells you how much a nutrient in a serving of food contributes to a daily diet. 2,000 calories a day is used for general nutrition advice.

INGREDIENTS: Pasteurized milk, salt, culture, enzymes.

CONTAINS: Milk.



SHEEP'S MILK + COW'S MILK

FLAGSHEEP CLOTHBOUND

Traditionally clothbound and open-air aged for 15+ months, Flagsheep folds sheep's and cow's milk together to create a dense, fruity and earthy cheese with butterscotch sweetness.



AWARDS

2024 World Cheese Awards, Silver

2024 World Championship Cheese Contest, Gold

2023 American Cheese Society, First Place

2022 American Cheese Society, Best of Show

2019 World Cheese Awards, Bronze

2019, 2018, 2017 American Cheese Society, Third Place

16 LB TRUCKLE

ITEM CODE: 200019

CASE GTIN: 90782045113008

UNITS/CASE: One (1) 16 lb. truckle

6-8 OZ RANDOM WT. TRIANGLE

For more information, contact wholesale@beecherscheese.com.



SERVING SUGGESTIONS

Drizzle with sweet honey and serve with crisp, sliced pears and apples on a dessert plate, serve with rustic bread and salty olives, or enjoy with a fruity rosé.

AFFINAGE

This firm, natural rind, pasteurized mixed-milk cheese is first rubbed with butter and then aged at 47°F and 85% humidity. Each truckle is carefully attended to, consistently brushed and hand-turned throughout its aging. This method results in a 14-16% moisture loss during aging, allowing for the slightly lower moisture and higher salt content that creates Flagsheep's layered flavor and lovely dense bite.

Nutrition Facts

Amount/Serving	%DV*	Amount/Serving	%DV*
Total Fat 10g	13%	Total Carb. 1g	0%
Sat. Fat 7g	35%	Dietary Fiber 0g	0%
Trans Fat 0g		Total Sugars 0g	
Cholest. 25mg	8%	Incl. 0g Added Sugars	0%
Sodium 270mg	12%	Protein 7g	

Servings: Varied

Serv. Size: 1oz (28g)

Calories 120
per serving

Vitamin D 0% • Calcium 20%
Iron 0% • Potassium 0%

*The % Daily Value (DV) tells you how much a nutrient in a serving of food contributes to a daily diet. 2,000 calories a day is used for general nutrition advice.

INGREDIENTS: Pasteurized sheep's and cow's milk, salt, culture, enzymes.

CONTAINS: Milk.

SHEEPSHEEP CLOTHBOUND

Our 100% sheep's milk cheese is traditionally clothbound and open-air aged for 13+ months, enhancing the assertively earthy, slightly fruity, butterscotch flavors of the sheep's milk.



AWARDS

2018 American Cheese Society,
Third Place

16 LB TRUCKLE

ITEM CODE: 11393

CASE GTIN: 90782045113930

UNITS/CASE: One (1) 16 lb. truckle

6-8 OZ RANDOM WT. TRIANGLE

For more information, contact
wholesale@beecherscheese.com.



SERVING SUGGESTIONS

Drizzle with honey, or serve on crostini with thinly sliced serrano ham and spicy fruit jelly. Enjoy with Cabernet Sauvignon, Tempranillo, or an Oktoberfest-style beer.

AFFINAGE

This firm, natural rind, pasteurized sheep's milk cheese is first rubbed with butter and then aged at 47°F and 85% humidity. Each truckle is carefully attended to, consistently brushed and hand-turned throughout its aging. This traditional method results in a 14-16% moisture loss during aging, allowing for a slightly lower moisture and higher salt content, creating a rich taste and texture with a clean, creamy finish.

Nutrition Facts

Amount/Serving	%DV*	Amount/Serving	%DV*
Total Fat 10g	13%	Total Carb. 1g	0%
Sat. Fat 7g	35%	Dietary Fiber 0g	0%
Trans Fat 0g		Total Sugars 0g	
Cholest. 25mg	8%	Incl. 0g Added Sugars	0%
Sodium 270mg	12%	Protein 7g	

Servings: Varied

Serv. Size: 1oz (28g)

Calories 120
per serving

Vitamin D 0% • Calcium 20%
Iron 0% • Potassium 0%

*The % Daily Value (DV) tells you how much a nutrient in a serving of food contributes to a daily diet. 2,000 calories a day is used for general nutrition advice.

INGREDIENTS: Pasteurized sheep's milk, salt, culture, enzymes.

CONTAINS: Milk.

MARCO POLO RESERVE CLOTHBOUND

Crafted with green and black cracked peppercorns, this clothbound cheese is open-air aged for 8 months. Its distinct flavor has bite balanced with cream, smoothing it out to a buttery finish.



AWARDS

- 2024, 2021
World Cheese Awards, Gold
- 2024, 2018
American Cheese Society, Third Place
- 2022, 2016, 2014
American Cheese Society, First Place
- 2019 World Cheese Awards, Silver
- 2017, 2013 American Cheese Society, Second Place

16 LB TRUCKLE

ITEM CODE: 400000
CASE GTIN: 90782045112995
UNITS/CASE: One (1) 16 lb. truckle

6-8 OZ RANDOM WT. TRIANGLE

For more information, contact wholesale@beecherscheese.com.



SERVING SUGGESTIONS

Pair with honeycomb on a thin cracker, or with cold, sweet apples. For an additional layer of flavor, thinly shave onto a pasta dish, liberally chunk over a caesar salad, or shred atop a salad of apples and candied walnuts.

AFFINAGE

This firm, natural rind, pasteurized cow's milk cheese is first rubbed with butter and then aged at 47°F and 85% humidity. Each truckle is carefully attended to, consistently brushed and hand-turned throughout its aging. This traditional method results in a 14-16% moisture loss during aging, allowing for a slightly lower moisture and higher salt content, creating a rich taste and texture with a clean, creamy finish.

Nutrition Facts

Servings: Varied
Serv. Size: 1oz (28g)

Calories 120
per serving

Amount/Serving	%DV*	Amount/Serving	%DV*
Total Fat 10g	13%	Total Carb. 1g	0%
Sat. Fat 7g	35%	Dietary Fiber 0g	0%
Trans Fat 0g		Total Sugars 0g	
Cholest. 30mg	10%	Incl. 0g Added Sugars	0%
Sodium 210mg	9%	Protein 7g	

Vitamin D 0% • Calcium 20%
Iron 0% • Potassium 0%

*The % Daily Value (DV) tells you how much a nutrient in a serving of food contributes to a daily diet. 2,000 calories a day is used for general nutrition advice.

INGREDIENTS: Pasteurized milk, salt, pepper, culture, enzymes.

CONTAINS: Milk.

YULE KÄSE CLOTHBOUND

Inspired by the holiday season, this clothbound cheese is open-air aged for 13+ months before its final aging soaked in red wine and blackberry honey—delivering flavors of nut and caramel with sweet, floral tones.

AWARDS

2014, 2013 American Cheese Society, Second Place

16 LB TRUCKLE

ITEM CODE: 200019

CASE GTIN: 90782045113008

UNITS/CASE: One (1) 16 lb. truckle

6-8 OZ RANDOM WT. TRIANGLE

For more information, contact wholesale@beecherscheese.com.



SERVING SUGGESTIONS

Slice into triangles to create a festive holiday cheese platter heaped with clusters of fresh grapes and ribbons of salty prosciutto.

AFFINAGE

This firm, natural rind, pasteurized cow's milk cheese is first rubbed with butter and then aged at 47°F and 85% humidity. Each truckle is carefully attended, consistently brushed and hand-turned throughout its 13+ months of aging. This traditional method results in a 14-16% moisture loss during aging, allowing for a slightly lower moisture and higher salt content, creating a rich taste and texture with a clean, creamy finish.

Nutrition Facts

Amount/Serving	%DV*	Amount/Serving	%DV*
Total Fat 10g	13%	Total Carb. 1g	0%
Sat. Fat 7g	35%	Dietary Fiber 0g	0%
Trans Fat 0g		Total Sugars 0g	
Cholest. 25mg	8%	Incl. 0g Added Sugars	0%
Sodium 270mg	12%	Protein 7g	

Servings: Varied

Serv. Size: 1oz (28g)

Calories 120
per serving

Vitamin D 0% • Calcium 20%
Iron 0% • Potassium 0%

*The % Daily Value (DV) tells you how much a nutrient in a serving of food contributes to a daily diet. 2,000 calories a day is used for general nutrition advice.

INGREDIENTS: Pasteurized milk, salt, culture, enzymes. Rind treated with red wine and blackberry honey.

CONTAINS: Milk.



PLAIN CHEESE CURDS

Our bite-size nuggets of fresh, pasteurized “squeaky” cheese are full-flavored with a clean, milky taste—an ideal snack food, simple appetizer, or delicious addition to your favorite dish.



AWARDS

2024, 2018, 2015 American Cheese Society, Second Place

2014 American Cheese Society, First Place

SERVING SUGGESTIONS

Toss into a salad, pasta, or serve as an appetizer paired with a glass of Rosé, Chenin Blanc or a pint of ale or hard cider.

Nutrition Facts

Servings: Varied

Serv. Size: 1oz. (28g)

Calories 110
per serving

Amount/Serving	%DV*	Amount/Serving	%DV*
Total Fat 9g	12%	Total Carb. 1g	0%
Sat. Fat 6g	30%	Dietary Fiber 0g	0%
Trans Fat 0g		Total Sugars 0g	
Cholest. 25mg	8%	Incl. Added Sugars	0%
Sodium 220mg	10%	Protein 6g	

Vitamin D 0% • Calcium 15%
Iron 0% • Potassium 0%

*The % Daily Value (DV) tells you how much a nutrient in a serving of food contributes to a daily diet. 2,000 calories a day is used for general nutrition advice.

INGREDIENTS: Pasteurized milk, salt, culture, enzymes.

CONTAINS: Milk.



5 OZ TUB (SERVES 5)

UPC CODE: 7-82045-10050-0

ITEM CODE: 10013 CASE GTIN: 20782045100504

UNIT DIMENSIONS: 4.4" × 4.4" × 1.75"

CASE DIMENSIONS: 9.74" × 9.49" × 4.04"

UNITS/CASE: Eight (8) 5 oz. tubs

CASE CUBE: 0.216 ft³ CASE GROSS WEIGHT: 3 lb.

CASES/PALLET: 220 TI-HI: 20' × 11'



15 LB FOOD SERVICE (SERVINGS VARY)

ITEM CODE: 10012 CASE GTIN: 90782045100121

UNIT DIMENSIONS: 20" × 18" × 2.5"

CASE DIMENSIONS: 20.5" × 18.5" × 3"

UNITS/CASE: One (1) 15 lb. bag

CASE CUBE: 0.658 ft³ CASE GROSS WEIGHT: 15.5 lb.

CASES/PALLET: 52 TI-HI: 4' × 13'

MARKET HERB CHEESE CURDS

The bite-size nuggets of fresh, pasteurized “squeaky” cheese have rich flavors of olive oil, garlic, rosemary, and thyme—an ideal snack food, simple appetizer, or delicious addition to your favorite dish.



5 OZ TUB (SERVES 5)



UPC CODE: 7-82045-10051-7

ITEM CODE: 10014

CASE GTIN: 20782045100511

PACK SIZE: 5 OZ.

UNIT DIMENSIONS:

4.4" × 4.4" × 1.75"

CASE DIMENSIONS:

9.74" × 9.49" × 4.04"

UNITS/CASE:

Eight (8) 5 oz. tubs

CASE CUBE: 0.216 ft³

CASE GROSS WEIGHT: 3 lb.

CASES/PALLET: 220

TI-HI: 20' × 11'

SERVING SUGGESTIONS

Mix into a spicy meatloaf recipe, melt over a pizza, or enjoy fresh in a salad or alone as an appetizer.

Nutrition Facts

Servings: 5

Serv. Size: 1oz. (28g)

Calories 120
per serving

Amount/Serving	%DV*	Amount/Serving	%DV*
Total Fat 10g	13%	Total Carb. 2g	0%
Sat. Fat 7g	35%	Dietary Fiber 0g	0%
Trans Fat 0g		Total Sugars 0g	
Cholest. 30mg	10%	Incl. 0g Added Sugars	0%
Sodium 240mg	10%	Protein 6g	

Vitamin D 0% • Calcium 15%
Iron 0% • Potassium 0%

*The % Daily Value (DV) tells you how much a nutrient in a serving of food contributes to a daily diet. 2,000 calories a day is used for general nutrition advice.

INGREDIENTS: Cheese curds (pasteurized milk, salt, culture, enzymes), canolive oil (canola oil, olive oil), garlic, parsley, thyme, rosemary.

CONTAINS: Milk.

MARINATED PEPPERS CHEESE CURDS

The bite-size nuggets of fresh, pasteurized “squeaky” cheese have a savory herb and rich pepper flavor, with a hint of heat and garlic—an ideal snack food, simple appetizer, or delicious addition to your favorite dish.

5 OZ TUB (SERVES 5)



UPC CODE: 7-82045-10052-4

ITEM CODE: 10015

CASE GTIN: 20782045100528

PACK SIZE: 5 oz.

UNIT DIMENSIONS:

4.4" × 4.4" × 1.75"

CASE DIMENSIONS:

9.74" × 9.49" × 4.04"

UNITS/CASE:

Eight (8) 5 oz. tubs

CASE CUBE: 0.216 ft³

CASE GROSS WEIGHT: 3 lb.

CASES/PALLET: 220

TI-HI: 20' × 11'



SERVING SUGGESTIONS

Use in place of mozzarella in a caprese salad, melt over a pizza, or enjoy alone as an appetizer.

Nutrition Facts

Servings: 5

Serv. Size: 1oz. (28g)

Calories 100
per serving

Amount/Serving	%DV*	Amount/Serving	%DV*
Total Fat 9g	12%	Total Carb. <1g	0%
Sat. Fat 5g	25%	Dietary Fiber 0g	0%
Trans Fat 0g		Total Sugars 0g	
Cholest. 25mg	8%	Incl. 0g Added Sugars	0%
Sodium 220mg	10%	Protein 5g	

Vitamin D 0% • Calcium 15%
Iron 0% • Potassium 0%

*The % Daily Value (DV) tells you how much a nutrient in a serving of food contributes to a daily diet. 2,000 calories a day is used for general nutrition advice.

INGREDIENTS: Cheese curds (pasteurized milk, salt, culture, enzymes), peppers, non-GMO expeller pressed canola oil, extra virgin olive oil, vinegar, salt, garlic, spices, lemon juice, parsley.

CONTAINS: Milk.



FLAGSHIP CHEESE STICKS

Elevate your grab-and-go snack stash! Fifteen months of aging nurtures Flagship's uniquely robust, nutty flavor to perfection. With hints of browned butter and caramel, this semi-hard, pasteurized cow's milk cheese is balanced, dense and creamy.



AWARDS

2022, 2019 American Cheese Society, Second Place

2019 World Cheese Awards, Bronze

AVAILABLE IN VARIOUS SIZES

Nutrition Facts

1 serving (1 stick)

Serv. Size: 0.75oz (21g)

Calories 87
per serving

Amount/Serving	%DV*	Amount/Serving	%DV*
Total Fat 7g	9%	Total Carb. 1g	0%
Sat. Fat 5g	25%	Dietary Fiber 0g	0%
Trans Fat 0g		Total Sugars 0g	
Cholest. 22mg	7%	Incl. 0g Added Sugars	0%
Sodium 126mg	5%	Protein 5g	

Vitamin D 0% • Calcium 13%
Iron 0% • Potassium 0%

*The % Daily Value (DV) tells you how much a nutrient in a serving of food contributes to a daily diet. 2,000 calories a day is used for general nutrition advice.

INGREDIENTS: Pasteurized milk, salt, culture, enzymes.

CONTAINS: Milk.

SINGLE STICK PRODUCT SPECS

WRAPPER UPC CODE: 7-82045-10004-3

UNIT DIMENSIONS: 1.35" × 0.5" × 5.75"



8-PACK CARTON

UPC CODE: 7-82045-10010-4 ITEM CODE: 10010
 CASE GTIN: 10782045100101
 UNIT DIMENSIONS: 5.5" x 0.75" x 6.75"
 CASE DIMENSIONS: 11.625" x 7.875" x 8.25"
 UNITS/CASE: Sixteen (16) 8-pk cartons
 CASE CUBE: 0.437 ft³ CASE GROSS WT: 7.91 lb.
 CASES/PALLET: 120 TI-HI: 20' x 6'



24-PACK CARTON

UPC CODE: 7-82045-10008-1 ITEM CODE: 10056
 CASE GTIN: 20782045100085
 UNIT DIMENSIONS: 4" x 4" x 6"
 CASE DIMENSIONS: 8.88" x 4.88" x 7.06"
 UNITS/CASE: Two (2) 24-pack cartons
 CASE CUBE: 0.177 ft³ CASE GROSS WEIGHT: 2.5 lb.
 CASES/PALLET: 280 TI-HI: 40' x 7'



SINGLE STICKS (FOOD SERVICE)

UPC CODE: 7-82045-10004-3 ITEM CODE: 10004
 CASE GTIN: 10782045100040
 UNIT DIMENSIONS: 1.35" x 0.5" x 5.75"
 CASE DIMENSIONS: 12.8" x 9.5" x 8.13"
 UNITS/CASE: Two hundred (200) 0.75oz sticks
 CASE CUBE: 0.572 ft³ CASE GROSS WEIGHT: 9.5 lb.
 CASES/PALLET: 90 TI-HI: 50' x 6'





MARCO POLO CHEESE STICKS

Elevate your grab-and-go snack stash! As adventurous as its namesake, Marco Polo blends lightly-milled green and black peppercorns to create a bold, creamy cow's milk cheese with savory umami and butter notes.



AWARDS

2008 American Cheese Society,
First Place

2007 World Cheese Awards,
Gold

2005 World Cheese Awards,
Bronze

AVAILABLE IN VARIOUS SIZES

Nutrition Facts

1 serving (1 stick)

Serv. Size: 0.75 oz (21g)

Calories 87
per serving

Amount/Serving	%DV*	Amount/Serving	%DV*
Total Fat 7g	9%	Total Carb. 1g	0%
Sat. Fat 5g	25%	Dietary Fiber 0g	0%
Trans Fat 0g		Total Sugars 0g	
Cholest. 22mg	7%	Incl. 0g Added Sugars	0%
Sodium 126mg	5%	Protein 5g	

Vitamin D 0% • Calcium 13%
Iron 0% • Potassium 0%

*The % Daily Value (DV) tells you how much a nutrient in a serving of food contributes to a daily diet. 2,000 calories a day is used for general nutrition advice.

INGREDIENTS: Pasteurized milk, salt, pepper, culture, enzymes.

CONTAINS: Milk.

SINGLE STICK PRODUCT SPECS

WRAPPER UPC CODE: 7-82045-10065-4

UNIT DIMENSIONS: 1.35" × 0.5" × 5.75"



8-PACK CARTON

UPC CODE: 7-82045-10074-6

ITEM CODE: 10074 CASE GTIN: 10782045100743

UNIT DIMENSIONS: 5.5" x 0.75" x 6.75"

CASE DIMENSIONS: 7.375" x 6.375" x 7.625"

UNITS/CASE: Eight (8) 8-pack cartons

CASE CUBE: 0.207 ft³ CASE GROSS WT: 3.5 lb.

CASES/PALLET: 190 TI-HI: 38' x 5'



24-PACK CARTON

UPC CODE: 7-82045-10009-8

ITEM CODE: 10009 CASE GTIN: 10782045100095

UNIT DIMENSIONS: 4" x 4" x 6"

CASE DIMENSIONS: 8.88" x 4.88" x 7.06"

UNITS/CASE: Two (2) 24-pack cartons

CASE CUBE: 0.177 ft³ CASE GROSS WEIGHT: 2.5 lb.

CASES/PALLET: 280 TI-HI: 40' x 7'



JUST JACK CHEESE STICKS

Elevate your grab-and-go snack stash! This cheese is anything but “Just” Jack. We make it with pasteurized whole cow’s milk, giving it a buttery texture and the especially rich flavor of pure cream.



AVAILABLE IN VARIOUS SIZES

Nutrition Facts

1 serving (1 stick)

Serv. Size: 0.75 oz (21g)

Calories 90
per serving

Amount/Serving	%DV*
Total Fat 7.5g	10%
Sat. Fat 5g	25%
Trans Fat 0g	
Cholest. 22.5mg	8%
Sodium 127.5mg	5%

*The % Daily Value (DV) tells you how much a nutrient in a serving of food contributes to a daily diet. 2,000 calories a day is used for general nutrition advice.

INGREDIENTS: Pasteurized milk, salt, culture, enzymes.

CONTAINS: Milk.

SINGLE STICK PRODUCT SPECS

WRAPPER UPC CODE: 7-82045-11513-9

UNIT DIMENSIONS: 1.35" x 0.5" x 5.75"



8-PACK CARTON

UPC CODE: 7-82045-11512-2

ITEM CODE: 10074 CASE GTIN: 10782045100743

UNIT DIMENSIONS: 5.5" x 0.75" x 6.75"

CASE DIMENSIONS: 11.625" x 7.875" x 8.25"

UNITS/CASE: Eight (8) 8-pack cartons

CASE CUBE: 0.437 ft³ CASE GROSS WT: 7.91 lb.

CASES/PALLET: 120 TI-HI: 20' x 6'



24-PACK CARTON

UPC CODE: 7-82045-11511-5

ITEM CODE: 11511 CASE GTIN: 10782045115112

UNIT DIMENSIONS: 4" x 4" x 6"

CASE DIMENSIONS: 8.88" x 4.88" x 7.06"

UNITS/CASE: Two (2) 24-pack cartons

CASE CUBE: 0.207 ft³ CASE GROSS WEIGHT: 3.5 lb.

CASES/PALLET: 190 TI-HI: 38' x 5'

JUST JACK SLICED CHEESE

This cheese is anything but “Just” Jack. We make it with pasteurized whole cow’s milk, giving it a buttery texture and the especially rich flavor of pure cream.



7 OZ PACK (SERVES 7)



UPC CODE: 7-82045-10017-3

ITEM CODE: 10017

CASE GTIN: 10782045100170

PACK SIZE: 7 oz. (7 slices)

UNIT DIMENSIONS:

12.5" x 9" x 1"

CASE DIMENSIONS:

13.3" x 9.4" x 5.75"

UNITS/CASE: Twelve (12) 7 oz. packs

CASE CUBE: 0.416 ft³

CASE GROSS WEIGHT: 7.4 lb.

CASES/PALLET: 150

TI-HI: 15' x 10'



SERVING SUGGESTIONS

Enjoy in a simple cheese sandwich or wrap spread with chutney, or melted on a burger. For extra gooey goodness, use it in place of shredded cheese in lasagnas, casseroles, or scrambled eggs.

Nutrition Facts

	Amount/Serving	%DV*	Amount/Serving	%DV*
Total Fat 10g	13%	Total Carb. 1g	0%	
Sat. Fat 7g	35%	Dietary Fiber 0g	0%	
Trans Fat 0g		Total Sugars 0g		
Cholest. 30mg	10%	Incl. Og Added Sugars	0%	
Sodium 170mg	7%	Protein 7g		
Calories per serving 120		Vitamin D 0% • Calcium 15%		
		Iron 0% • Potassium 0%		

*The % Daily Value (DV) tells you how much a nutrient in a serving of food contributes to a daily diet. 2,000 calories a day is used for general nutrition advice.

INGREDIENTS: Pasteurized milk, salt, culture, enzymes.

CONTAINS: Milk.

2 LB FOOD SERVICE (SERVINGS VARY)

UPC CODE: 7-82045-11375-3

ITEM CODE: 11375 CASE GTIN: 10782045113750

UNIT DIMENSIONS: —

CASE DIMENSIONS: 16.63" x 9.88" x 6.13

UNITS/CASE: Six (6) 2 lb. packs

CASE CUBE: 0.583 ft³ CASE GROSS WEIGHT: 14 lb.

CASES/PALLET: 80 TI-HI: 10' x 8'

CRACKERS



ORIGINAL CRACKERS

Rich and buttery with a nutty sweetness, these crackers have an excellent crunch—outstanding on their own, or topped with a slice of our award-winning cheese.



5 OZ BAG

UPC CODE: 7-82045-11200-8

ITEM CODE: 700002 CASE GTIN: 10782045112005

UNIT DIMENSIONS: 4.25" x 2.5" x 8"

CASE DIMENSIONS: 14.25" x 10.5" x 8.3"

UNITS/CASE: Twelve (12) 5 oz. bags

CASE CUBE: 0.719 ft³ CASE GROSS WEIGHT: 4.9 lb.

CASES/PALLET: 88 TI-HI: 11' x 8'

SHELF LIFE: 9 months

Nutrition Facts

About 4.5 serv. per container

Serving Size:

About 10 crackers (30g)

Calories 120
per serving

Amount/Serving	%DV*	Amount/Serving	%DV*
Total Fat 4g	5%	Total Carb. 19g	7%
Sat. Fat 2g	10%	Dietary Fiber <1g	2%
Trans Fat 0g		Total Sugars 1g	
Cholest. 10mg	3%	Incl. 1g Added Sugars	2%
Sodium 280mg	12%	Protein 2g	

Vitamin D 0mcg 0% • Calcium 0mg 0%
Iron 1mg 6% • Potassium 30mg 0%

*The % Daily Value (DV) tells you how much a nutrient in a serving of food contributes to a daily diet. 2,000 calories a day is used for general nutrition advice.

INGREDIENTS: Enriched unbleached flour (wheat flour, malted barley flour, niacin, reduced iron, thiamin mononitrate, riboflavin, folic acid), corn flour, butter (cream, salt), distilled white vinegar, sugar, sea salt, baking soda.

CONTAINS: Wheat, milk.

KOSHER CERTIFIED: The KOF-K emblem is the internationally recognized trademark of KOF-K Kosher Supervision, one of the foremost Kosher certification agencies in the United States. Only those products and services meeting the strictest standards of Kosher law are permitted to display the symbol, which is protected under Federal law against unauthorized use. When consumers see the KOF-K on a product, they know they are buying food that meet the highest levels of Kashrus (Kosher law).



1 OZ SNACK PACK (FOOD SERVICE)

UPC CODE: 7-82045-11384-5

ITEM CODE: 11384 CASE GTIN: 10782045113842

UNIT DIMENSIONS: 1.25" x 4" x 2"

CASE DIMENSIONS: 14.25" x 10.5" x 8.3"

UNITS/CASE: One hundred (100) 1 oz. packs

CASE CUBE: 0.719 ft³ CASE GROSS WEIGHT: 7 lb.

CASES/PALLET: 88 TI-HI: 11' x 8'

SHELF LIFE: 9 months

Nutrition Facts

5 servings per container
 Serv. Size: 1 cup (193g)

Calories per serving 290

Amount/Serving	%DV*	Amount/Serving	%DV*
Total Fat 14g	18%	Total Carb. 29g	11%
Sat. Fat 7g	35%	Dietary Fiber 4g	14%
Trans. Fat 0g		Total Sugars 7g	
Cholest. 40mg	13%	Incl. 4g Added Sugars	8%
Sodium 1040mg	45%	Protein 13g	

Vitamin D 0mcg 0% • Calcium 326mg 25%
 Iron 2mg 10% • Potassium 432mg 10%

*The % Daily Value (DV) tells you how much a nutrient in a serving of food contributes to a daily diet. 2,000 calories a day is used for general nutrition advice.

INGREDIENTS: Enriched unbleached flour (wheat flour, malted barley flour, niacin, reduced iron, thiamin mononitrate, riboflavin, folic acid), corn flour, butter (cream [milk], salt), distilled white vinegar, cane sugar, sea salt, baking soda.

CONTAINS: Wheat, milk.

KOSHER CERTIFIED: The KOF-K emblem is the internationally recognized trademark of KOF-K Kosher Supervision, one of the foremost Kosher certification agencies in the United States. Only those products and services meeting the strictest standards of Kosher law are permitted to display the symbol, which is protected under Federal law against unauthorized use. When consumers see the KOF-K on a product, they know they are buying food that meet the highest levels of Kashrus (Kosher law).

FLAGSHIP CHEESE CRACKERS

With Beecher's award-winning Flagship cheese baked right in, these crackers have an excellent crunch—making for the perfect full-flavored bite, every time.



5 OZ BAG



UPC CODE: 7-82045-11287-9

ITEM CODE: 700000

CASE GTIN: 10782045112876

UNIT DIMENSIONS:

4.25" x 2.5" x 8"

CASE DIMENSIONS:

14.25" x 10.5" x 8.3"

UNITS/CASE:

Twelve (12) 5 oz. bags

CASE CUBE: 0.719 ft³

CASE GROSS WEIGHT: 4.9 lb.

CASES/PALLET: 88

TI-HI: 11' x 8'

SHELF LIFE: 9 months

SERVING SUGGESTION

While flavorful enough to enjoy on their own, these crackers are great topped with extra Beecher's cheese—try Extra-Aged Flagship, Marco Polo Reserve, or Smoked Flagship.

Nutrition Facts

About 4.5 serv. per container

Serving Size:

About 9 crackers (30g)

Calories per serving **120**

Amount/Serving	%DV*	Amount/Serving	%DV*
Total Fat 4g	5%	Total Carb. 16g	6%
Sat. Fat 1.5g	8%	Dietary Fiber <1g	2%
Trans Fat 0g		Total Sugars 1g	
Cholest. 5mg	2%	Incl. 1g Added Sugars	2%
Sodium 360mg	16%	Protein 3g	

Vitamin D 0mcg 0% • Calcium 50mg 4%
Iron 0.8mg 4% • Potassium 30mg 0%

*The % Daily Value (DV) tells you how much a nutrient in a serving of food contributes to a daily diet. 2,000 calories a day is used for general nutrition advice.

INGREDIENTS: Enriched unbleached flour (wheat flour, malted barley flour, niacin, reduced iron, thiamin mononitrate, riboflavin, folic acid), water, kosher Beecher's Flagship cheese pasteurized milk, salt, cultures, enzymes), corn flour, distilled white vinegar, canola oil, sugar, sea salt, baking soda.

CONTAINS: Wheat, milk.

KOSHER CERTIFIED: The KOF-K emblem is the internationally recognized trademark of KOF-K Kosher Supervision, one of the foremost Kosher certification agencies in the United States. Only those products and services meeting the strictest standards of Kosher law are permitted to display the symbol, which is protected under Federal law against unauthorized use. When consumers see the KOF-K on a product, they know they are buying food that meet the highest levels of Kashrus (Kosher law).

HONEY OAT CRACKERS

Rich and buttery with an earthy, subtle sweetness from local honey, these crackers have an excellent crunch—outstanding on their own, or topped with a slice of our award-winning cheese.

5 OZ BAG



UPC CODE: 7-82045-11386-9

ITEM CODE: 11386

CASE GTIN: 10782045113866

UNIT DIMENSIONS:

4.25" x 2.5" x 8"

CASE DIMENSIONS:

14.25" x 10.5" x 8.3"

UNITS/CASE:

Twelve (12) 5 oz. bags

CASE CUBE: 0.719 ft³

CASE GROSS WEIGHT: 4.9 lb.

CASES/PALLET: 88

TI-HI: 11' x 8'

SHELF LIFE: 9 months



SERVING SUGGESTION

While flavorful enough to enjoy on their own, these crackers are great topped with Beecher's cheese—try Flagship or Just Jack.

Nutrition Facts

About 4.5 serv. per container

Serving Size:

About 9 crackers (30g)

Calories 110
per serving

Amount/Serving	%DV*	Amount/Serving	%DV*
Total Fat 3.5g	4%	Total Carb. 18g	7%
Sat. Fat 2g	10%	Dietary Fiber 1g	4%
Trans Fat 0g		Total Sugars 3g	
Cholest. 10mg	3%	Incl.3g Added Sugars	6%
Sodium 260mg	11%	Protein 3g	

Vitamin D 0mcg 0% • Calcium 10mg 0%
Iron 1.1mg 6% • Potassium 50mg 2%

*The % Daily Value (DV) tells you how much a nutrient in a serving of food contributes to a daily diet. 2,000 calories a day is used for general nutrition advice.

INGREDIENTS: Enriched unbleached flour (wheat flour, malted barley flour, niacin, thiamin mononitrate, riboflavin, folic acid), water, oat bran, butter (cream, salt), distilled white vinegar, sugar, honey, corn flour, sea salt, baking soda.

CONTAINS: Wheat, milk.

KOSHER CERTIFIED: The KOF-K emblem is the internationally recognized trademark of KOF-K Kosher Supervision, one of the foremost Kosher certification agencies in the United States. Only those products and services meeting the strictest standards of Kosher law are permitted to display the symbol, which is protected under Federal law against unauthorized use. When consumers see the KOF-K on a product, they know they are buying food that meet the highest levels of Kashrus (Kosher law).



FROZEN ENTRÉES + SIDES





“WORLD’S BEST” MAC & CHEESE

Savor the richness of penne folded with an incomparable combination of award-winning Flagship and Just Jack cheeses. A top secret spice blend completes the recipe.

Also available Gluten Free (p. 42).



AWARDS

2023 Tasting Table,
Best Frozen Mac & Cheese

2023 *Food and Wine*,
Best Mac & Cheese in the U.S.

2020 SOFI Award, Gold Winner

9 OZ SINGLE SERVE (SERVES 1)

See Single Serve section (page 58) for details.

20 OZ MULTI-SERVE (SERVES 2-4)

UPC CODE: 7-82045-11201-5

ITEM CODE: 900007 CASE GTIN: 10782045112012

UNIT DIMENSIONS: 8.88" x 1.53" x 6.69"

CASE DIMENSIONS: 14" x 9.56" x 7.19"

UNITS/CASE: Eight (8) 20 oz. pans

CASE CUBE: 0.556 ft³ CASE GROSS WEIGHT: 11.15 lb.

CASES/PALLET: 117 TI-HI: 13' x 9'

Nutrition Facts

About 2.5 serv. per container
Serv. Size: 1 cup (225g)

Calories 460
per serving

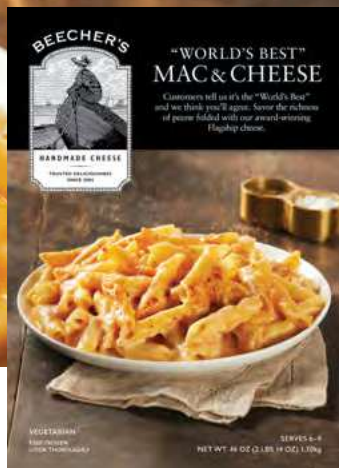
Amount/Serving	%DV*	Amount/Serving	%DV*
Total Fat 24g	31%	Total Carb. 40g	15%
Sat. Fat 15g	75%	Dietary Fiber 4g	14%
Trans. Fat 0.5g		Total Sugars 4g	
Cholest. 70mg	23%	Incl. Og Added Sugars 0%	
Sodium 640mg	28%	Protein 21g	

Vitamin D 1mcg 6% • Calcium 497mg 40%
Iron 2mg 10% • Potassium 301mg 6%

*The % Daily Value (DV) tells you how much a nutrient in a serving of food contributes to a daily diet. 2,000 calories a day is used for general nutrition advice.

INGREDIENTS: Cooked enriched penne rigate (water, durum wheat semolina, niacin, iron, thiamin mononitrate, riboflavin, folic acid), milk (vitamin D3 added), cheddar cheese (pasteurized milk, salt, culture, enzymes), jack cheese (pasteurized milk, salt, culture, enzymes), water, butter (cream, salt), rice starch, chipotle puree (red chile, water, chipotles [smoked red jalapeño], apple cider vinegar, lime juice, rice flour, sea salt, garlic, onion, honey, rosemary, thyme, sage, bay leaves), salt, rice flour, chili powder (chili pepper and other spices, salt, garlic powder), dehydrated garlic.

CONTAINS: Wheat, milk.



46 OZ MULTI-SERVE, FAMILY SIZE (SERVES 6-9)

UPC CODE: 7-82045-11338-8

ITEM CODE: 900018

CASE GTIN: 10782045113385

UNIT DIMENSIONS: 8.88" x 2" x 12.25"

CASE DIMENSIONS: 18.56" x 13.19" x 12.88"

UNITS/CASE: Twelve (12) 46 oz. pans CASE CUBE: 1.825 ft³

CASE GROSS WT: 39.8 lb. CASES/PALLET: 35 TI-HI: 7' x 5'

INGREDIENTS: Cooked enriched penne rigate (water, durum wheat semolina, niacin, iron, thiamin mononitrate, riboflavin, folic acid), milk (vitamin D₃ added), cheddar cheese (pasteurized milk, salt, culture, enzymes), jack cheese (pasteurized milk, salt, culture, enzymes), water, butter (cream, salt), rice starch, chipotle puree (red chile, water, chipotles [smoked red jalapeño], apple cider vinegar, lime juice, rice flour, sea salt, garlic, onion, honey, rosemary, thyme, sage, bay leaves), salt, rice flour, chili powder (chili pepper and other spices, salt, garlic powder), dehydrated garlic. **CONTAINS:** Wheat, milk.

Nutrition Facts

About 6 serv. per container
Serv. Size: 1 cup (225g)

Calories per serving 460

Amount/Serving	%DV*	Amount/Serving	%DV*
Total Fat 24g	31%	Total Carb. 40g	15%
Sat. Fat 16g	80%	Dietary Fiber 4g	14%
Trans. Fat 0.5g		Total Sugars 4g	
Cholest. 70mg	23%	Incl. Og Added Sugars 0%	
Sodium 640mg	28%	Protein 21g	
Vitamin D 1mcg 6%	Calcium 502mg 40%		
Iron 2mg 10%	Potassium 301mg 6%		

*The % Daily Value (DV) tells you how much a nutrient in a serving of food contributes to a daily diet. 2,000 calories a day is used for general nutrition advice.

6 LB FOOD SERVICE (SERVES 12)

UPC CODE: 7-82045-11335-7

ITEM CODE: 900008

CASE GTIN: 10782045113354

UNIT DIMENSIONS: 12" x 10" x 3"

CASE DIMENSIONS: 21.25" x 13" x 5.75"

UNITS/CASE: Four (4) 6 lb. pans CASE CUBE: 0.928 ft³

CASE GROSS WT: 26.5 lb. CASES/PALLET: 55 TI-HI: 11' x 5'

INGREDIENTS: Cooked enriched penne rigate (water, durum wheat semolina, niacin, iron, thiamin mononitrate, riboflavin, folic acid), milk (vitamin D₃ added), Flagship cheese (pasteurized milk, salt, culture, enzymes), Just Jack cheese (pasteurized milk, salt, culture, enzymes), water, rice starch, butter (cream, salt), chipotle puree (chipotle peppers, water, tomato paste, sugar, contains 2% or less sunflower seed oil, onion, cornstarch, vinegar, salt, paprika, garlic, spices), salt, rice flour, chili powder (chili pepper and other spices, salt, garlic powder), dehydrated garlic. **CONTAINS:** Wheat, milk.

Nutrition Facts

12 servings per container
Serv. Size: 1 cup (225g)

Calories per serving 460

Amount/Serving	%DV*	Amount/Serving	%DV*
Total Fat 24g	31%	Total Carb. 39g	14%
Sat. Fat 16g	80%	Dietary Fiber 4g	14%
Trans. Fat 0.5g		Total Sugars 5g	
Cholest. 70mg	23%	Incl. Og Added Sugars 0%	
Sodium 710mg	31%	Protein 21g	
Vitamin D 1mcg 6%	Calcium 505mg 40%		
Iron 2mg 10%	Potassium 302mg 6%		

*The % Daily Value (DV) tells you how much a nutrient in a serving of food contributes to a daily diet. 2,000 calories a day is used for general nutrition advice.

 GLUTEN FREE

 VEGETARIAN

“WORLD’S BEST” MAC & CHEESE

This gluten-free alternative to our popular original delivers the same creamy flavor, featuring our award-winning Flagship and Just Jack cheeses, rice penne pasta and a hint of spice.



PRODUCT SPECS



7 82045 11315 9

UPC CODE: 7-82045-11315-9

ITEM CODE: 900003

CASE GTIN: 10782045113156

PACK SIZE: 18 OZ.

UNIT DIMENSIONS:

8.88" × 1.53" × 6.69"

CASE DIMENSIONS:

20.5" × 9.5" × 5.75"

UNITS/CASE:

Nine (9) 18 oz. pans

CASE CUBE: 0.648 ft³

CASE GROSS WEIGHT: 11.63 lb.

CASE/TIER: 11

TIERS/PALLET: 9

CASES/PALLET: 99

TI-HI: 11' × 9'

9 OZ SINGLE SERVE (SERVES 1)

See Single Serve section (page 59) for details.

18 OZ MULTI-SERVE (SERVES 2-4)

Nutrition Facts

About 2.5 serv. per container
Serv. Size: 1 cup (202g)

Calories 420
per serving

Amount/Serving	%DV*	Amount/Serving	%DV*
Total Fat 22g	28%	Total Carb. 41g	15%
Sat. Fat 14g	70%	Dietary Fiber 3g	11%
Trans. Fat 0.5g		Total Sugars 3g	
Cholest. 60mg	20%	Incl. 0g Added Sugars	0%
Sodium 580mg	25%	Protein 16g	

Vitamin D 1mcg 6% • Calcium 437mg 35%
Iron 1mg 6% • Potassium 236mg 6%

*The % Daily Value (DV) tells you how much a nutrient in a serving of food contributes to a daily diet. 2,000 calories a day is used for general nutrition advice.

INGREDIENTS: Gluten-free penne pasta (water, corn flour, white rice flour), milk (vitamin D₃ added), cheddar cheese (pasteurized milk, salt, culture, enzymes), jack cheese (pasteurized milk, salt, culture, enzymes), water, rice flour, butter (cream, salt), chipotle puree (red chile, water, chipotles [smoked red jalapeño], apple cider vinegar, lime juice, rice flour, sea salt, garlic, onion, honey, rosemary, thyme, sage, bay leaves), salt, chili powder (chili pepper and other spices, salt, garlic powder), dehydrated garlic.

CONTAINS: Milk.

ALLERGY INFORMATION: This product has been tested for less than 20ppm gluten.

SMOKED FLAGSHIP MAC & CHEESE

This delicious twist on our “World’s Best” Mac is made with a hint of spice, penne, and Beecher’s Smoked Flagship cheese, which is naturally cold-smoked over apple and cherry hardwood.



PRODUCT SPECS



UPC CODE: 7-82045-11354-8

ITEM CODE: 900011

CASE GTIN: 10782045113545

PACK SIZE: 20 OZ.

UNIT DIMENSIONS:
8.88" × 1.53" × 6.69"

CASE DIMENSIONS:
14" × 9.56" × 7.19"

UNITS/CASE:
Eight (8) 20 oz. pans

CASE CUBE: 0.557 ft³

CASE GROSS WEIGHT: 11.15 lb.

CASES/PALLET: 117

TI-HI: 13' × 9'

20 OZ MULTI-SERVE (SERVES 2-4)

Nutrition Facts

About 2.5 serv. per container
Serv. Size: 1 cup (225g)

Calories 470
per serving

Amount/Serving	%DV*	Amount/Serving	%DV*
Total Fat 25g	32%	Total Carb. 41g	15%
Sat. Fat 16g	80%	Dietary Fiber 4g	14%
Trans. Fat 0.5g		Total Sugars 4g	
Cholest. 70mg	23%	Incl. 0g Added Sugars	0%
Sodium 580mg	25%	Protein 21g	

Vitamin D 1mcg 6% • Calcium 510mg 40%
Iron 2mg 10% • Potassium 308mg 6%

*The % Daily Value (DV) tells you how much a nutrient in a serving of food contributes to a daily diet. 2,000 calories a day is used for general nutrition advice.

INGREDIENTS: Cooked enriched penne rigate (water, durum wheat semolina, niacin, iron, thiamin mononitrate, riboflavin, folic acid), milk (vitamin D₃ added), smoked cheddar cheese (pasteurized milk, salt, culture, enzymes), butter (cream, salt), rice flour, water, chipotle puree (red chile, water, chipotles [smoked red jalapeño], apple cider vinegar, lime juice, rice flour, sea salt, garlic, onion, honey, rosemary, thyme, sage, bay leaves), salt, dehydrated garlic.

CONTAINS: Wheat, milk.

HATCH CHILE MAC & CHEESE

This flavorful spin on our classic “World’s Best” packs a punch with its unique, craveable blend of creamy cheese and spicy, roasted Hatch chiles.



PRODUCT SPECS



UPC CODE: 7-82045-11410-1

ITEM CODE: 11410

CASE GTIN: 10782045114108

PACK SIZE: 20 OZ.

UNIT DIMENSIONS:
6.875" x 1.72" x 8.84"

CASE DIMENSIONS:
14.625" x 9" x 7.25"

UNITS/CASE:
Eight (8) 20 oz. pans

CASE CUBE: 0.552 ft³

CASE GROSS WEIGHT: 11 lb.

CASES/PALLET: 117

TI-HI: 13' x 9'

20 OZ MULTI-SERVE (SERVES 2-4)

Nutrition Facts

About 25 serv. per container

Serv. Size: 1 cup (225g)

Calories 500
per serving

Amount/Serving	%DV*	Amount/Serving	%DV*
Total Fat 21g	27%	Total Carb. 56g	20%
Sat. Fat 13g	65%	Dietary Fiber 4g	14%
Trans. Fat 0.5g		Total Sugars 5g	
Cholest. 55mg	18%	Incl. Og Added Sugars: 0%	
Sodium 630mg	27%	Protein 22g	

Vitamin D 0mcg 0% • Calcium 427mg 35%
Iron 3mg 15% • Potassium 430mg 10%

*The % Daily Value (DV) tells you how much a nutrient in a serving of food contributes to a daily diet. 2,000 calories a day is used for general nutrition advice.

INGREDIENTS: Cooked enriched penne rigate (water, durum wheat semolina, niacin, iron, thiamin mononitrate, riboflavin, folic acid), milk (vitamin D₃ added), cheddar cheese (pasteurized milk, salt, culture, enzymes), roasted Hatch green chile (green chile, water, lime juice), water, jack cheese (pasteurized milk, salt, culture, enzymes), roasted poblano peppers, butter (cream, salt), rice starch, chipotle in adobo puree (red chile, water, chipotles [smoked red jalapeño], apple cider vinegar, lime juice, rice flour, sea salt, garlic, onion, honey, rosemary, thyme, sage, bay leaves), salt, distilled white vinegar (distilled white vinegar diluted with water to 5% acidity), rice flour, hatch chili powder (green chili peppers), jalapeño powder, smoked paprika, dehydrated garlic.

CONTAINS: Wheat, milk.

BROCCOLI MAC & CHEESE

Based on our “World’s Best” Mac & Cheese, this comfort dish for connoisseurs is creamy and delicious, with the added crunch of broccoli and earthiness of smoked paprika.



PRODUCT SPECS



UPC CODE: 7-82045-11502-3

ITEM CODE: 11502

CASE GTIN: 10782045115020

PACK SIZE: 18 OZ.

UNIT DIMENSIONS:
8.88" × 1.53" × 6.69"

CASE DIMENSIONS:
14" × 9.56" × 7.19"

UNITS/CASE:
Eight (8) 18 oz. pans

CASE CUBE: 0.557 ft³

CASE GROSS WEIGHT: 11.15 lb.

CASES/PALLET: 117

TI-HI: 13' × 9'

18 OZ MULTI-SERVE (SERVES 2-4)

Nutrition Facts

About 2.5 serv. per container

Serv. Size: 1 cup (225g)

Calories 380
per serving

Amount/Serving	%DV*	Amount/Serving	%DV*
Total Fat 19g	24%	Total Carb. 36g	13%
Sat. Fat 12g	60%	Dietary Fiber 5g	18%
Trans. Fat 0.5g		Total Sugars 4g	
Cholest. 55mg	18%	Incl. Og Added Sugars	0%
Sodium 510mg	22%	Protein 18g	

Vitamin D 1mcg 6% • Calcium 414mg 30%
Iron 2mg 10% • Potassium 323mg 6%

*The % Daily Value (DV) tells you how much a nutrient in a serving of food contributes to a daily diet. 2,000 calories a day is used for general nutrition advice.

INGREDIENTS: Cooked enriched penne rigate (water, durum wheat semolina, niacin, iron, thiamin mononitrate, riboflavin, folic acid), milk (vitamin D3 added), broccoli, cheddar cheese (pasteurized milk, salt, culture, enzymes), jack cheese (pasteurized milk, salt, culture, enzymes), water, butter (cream, salt), rice starch, chipotle puree (red chile, water, chipotles [smoked red jalapeño], apple cider vinegar, lime juice, rice flour, sea salt, garlic, onion, honey, rosemary, thyme, sage, bay leaves), salt, rice flour, smoked paprika, dehydrated garlic.

CONTAINS: Wheat, milk.

MARIACHI MAC & CHEESE

A south-of-the-border riff of our “World’s Best” Mac & Cheese featuring roasted Anaheim chiles and a fresh veggie blend of hearty cauliflower bits, red onion, corn and red bell pepper.



PRODUCT SPECS



UPC CODE: 7-82045-11274-9

ITEM CODE: 900019

CASE GTIN: 20782045112743

PACK SIZE: 20 OZ.

UNIT DIMENSIONS:
8.88" × 1.53" × 6.69"

CASE DIMENSIONS:
14" × 9.56" × 7.19"

UNITS/CASE:
Eight (8) 20 oz. pans

CASE CUBE: 0.557 ft³

CASE GROSS WEIGHT: 11.15 lb.

CASES/PALLET: 117

TI-HI: 13' × 9'

20 OZ MULTI-SERVE (SERVES 2-4)

Nutrition Facts

About 2.5 serv. per container

Serv. Size: 1 cup (225g)

Calories 370
per serving

Amount/Serving	%DV*	Amount/Serving	%DV*
Total Fat 18g	23%	Total Carb. 37g	13%
Sat. Fat 11g	55%	Dietary Fiber 4g	14%
Trans. Fat 0g		Total Sugars 5g	
Cholest. 50mg	17%	Incl. Og Added Sugars	0%
Sodium 660mg	29%	Protein 16g	

Vitamin D 2mcg 10% • Calcium 366mg 30%
Iron 2mg 10% • Potassium 324mg 6%

*The % Daily Value (DV) tells you how much a nutrient in a serving of food contributes to a daily diet. 2,000 calories a day is used for general nutrition advice.

INGREDIENTS: Cooked enriched penne rigate (water, durum wheat semolina, niacin, iron, thiamin mononitrate, riboflavin, folic acid), milk (vitamin D3 added), Flagship cheese (pasteurized milk, salt, culture, enzymes), cauliflower, green chili peppers (green chili peppers, water, sea salt, citric acid), red bell pepper, roasted red onion, corn, Just Jack cheese (pasteurized milk, salt, culture, enzymes), chipotle puree (chipotle peppers, water, tomato paste, sugar, contains 2% or less sunflower seed oil, onion, corn starch, vinegar, salt, paprika, garlic, spices), butter (cream, salt), water, rice starch, rice flour, salt, dehydrated garlic, chili powder (chili pepper and other spices, salt, garlic powder), cilantro.

CONTAINS: Wheat, milk.

PENNE ALLA “VODKA” SAUCE WITH CAULIFLOWER

Cauliflower’s nutty crunch folds perfectly into a bright marinara and creamy Flagship sauce (reminiscent of traditional vodka sauce, sans vodka) for an indulgent pasta everyone will love.



PRODUCT SPECS



UPC CODE: 7-82045-11503-0

ITEM CODE: 11503

CASE GTIN: 10782045115037

PACK SIZE: 20 OZ.

UNIT DIMENSIONS:
8.88" × 1.53" × 6.69"

CASE DIMENSIONS:
14" × 9.56" × 7.19"

UNITS/CASE:
Eight (8) 20 oz. pans

CASE CUBE: 0.557 ft³

CASE GROSS WEIGHT: 11.15 lb.

CASES/PALLET: 117

TI-HI: 13' × 9'

20 OZ MULTI-SERVE (SERVES 2-4)

Nutrition Facts

About 2.5 serv. per container
Serv. Size: 1 cup (225g)

Calories 340
per serving

Amount/Serving	%DV*	Amount/Serving	%DV*
Total Fat 17g	22%	Total Carb. 34g	12%
Sat. Fat 11g	55%	Dietary Fiber 4g	14%
Trans. Fat 0g		Total Sugars 4g	
Cholest. 45mg	15%	Incl. Og Added Sugars	0%
Sodium 610mg	27%	Protein 16g	

Vitamin D 1mcg 6% • Calcium 363mg 30%
Iron 2mg 10% • Potassium 338mg 8%

*The % Daily Value (DV) tells you how much a nutrient in a serving of food contributes to a daily diet. 2,000 calories a day is used for general nutrition advice.

INGREDIENTS: Cooked enriched penne rigate (water, durum wheat semolina, niacin, iron, thiamin mononitrate, riboflavin, folic acid), cauliflower, milk (vitamin D₃ added), cheddar cheese (pasteurized milk, salt, culture, enzymes), tomatoes (tomatoes, tomato puree, citric acid), water, jack cheese (pasteurized milk, salt, culture, enzymes), rice starch, garlic (garlic, water), jalapeño pepper, butter (cream, salt), rice flour, salt, lemon juice, chipotle puree (red chile, water, chipotles [smoked red jalapeño], apple cider vinegar, lime juice, rice flour, sea salt, garlic, onion, honey, rosemary, thyme, sage, bay leaves), cane sugar, spices (crushed red pepper, parsley, oregano, black pepper).

CONTAINS: Wheat, milk.

CHEESE CURD LASAGNA

We're confident this lasagna is another "World's Best" winner, like our unrivaled Mac. It's topped with cheese curds and filled with a bright tomato sauce, plus three additional cheeses: ricotta, mozzarella, and Beecher's Flagship.

Also available Gluten Free (p. 49).

PRODUCT SPECS



UPC CODE: 7-82045-10005-0

ITEM CODE: 10005

CASE GTIN: 10782045100057

PACK SIZE: 23 oz.

UNIT DIMENSIONS:
8.88" x 1.53" x 6.69"

CASE DIMENSIONS:
14" x 9.56" x 7.19"

UNITS/CASE:

Eight (8) 23 oz. pan

CASE CUBE: 0.557 ft³

CASE GROSS WEIGHT: 12.65 lb.

CASES/PALLET: 117

TI-HI: 13' x 9'



10 OZ SINGLE SERVE (SERVES 1)

See Single Serve section (page 60) for details.

23 OZ MULTI-SERVE (SERVES 2-4)

UPC CODE: 7-82045-10005-0

ITEM CODE: 10005 CASE GTIN: 10782045100057

UNIT DIMENSIONS: 8.88" x 1.53" x 6.69"

CASE DIMENSIONS: 14" x 9.56" x 7.19"

UNITS/CASE: Eight (8) 23 oz. pans

CASE CUBE: 0.557 ft³ CASE GROSS WEIGHT: 12.65 lb.

CASES/PALLET: 117 TI-HI: 13' x 9'

Nutrition Facts

About 3 serv. per container

Serv. Size: 1 cup (227g)

Calories per serving 350

Amount/Serving	%DV*	Amount/Serving	%DV*
Total Fat 18g	23%	Total Carb. 32g	12%
Sat. Fat 11g	55%	Dietary Fiber 3g	11%
Trans. Fat 0.5g		Total Sugars 8g	
Cholest. 50mg	17%	Incl. Added Sugars 2%	
Sodium 820mg	36%	Protein 16g	
Vitamin D 0mcg 0%		Calcium 378mg 30%	
Iron 2mg 10%		Potassium 503mg 10%	

*The % Daily Value (DV) tells you how much a nutrient in a serving of food contributes to a daily diet. 2,000 calories a day is used for general nutrition advice.

INGREDIENTS: Tomatoes (tomatoes, tomato puree, sea salt, citric acid), cooked lasagna pasta (water, semolina [milled wheat], egg whites), ricotta cheese (pasteurized whey, pasteurized cream, vinegar, salt), cheese curds (pasteurized milk, culture, enzymes, salt), mozzarella cheese (cultured pasteurized milk, salt, enzymes), Flagship cheese (pasteurized milk, salt, culture, enzymes), spinach, water, extra virgin olive oil, olives (olives, water, sea salt), kale, garlic (garlic, water), sea salt, cane sugar, spices (oregano, thyme, black pepper, parsley, crushed red pepper), rice starch, corn starch.

CONTAINS: Wheat, milk, egg.



GLUTEN FREE



VEGETARIAN

CHEESE CURD LASAGNA

Our gluten-free lasagna topped with cheese curds doesn't skimp on big flavor. Layers of rice noodles are filled with a bright tomato sauce and three cheeses—including our signature Flagship.



AWARDS

2020 SOFI Award,
Best New Product

PRODUCT SPECS



7 82045 10006 7

UPC CODE: 7-82045-10006-7

ITEM CODE: 10006

CASE GTIN: 10782045100064

PACK SIZE: 21 OZ.

UNIT DIMENSIONS:
8.88" x 1.53" x 6.69"

CASE DIMENSIONS:
14" x 9.56" x 7.19"

UNITS/CASE:
Eight (8) 21 oz. pans

CASE CUBE: 0.557 ft³

CASE GROSS WEIGHT: 11.65 lb.

CASES/PALLET: 117

TI-HI: 13' x 9'

18 OZ MULTI-SERVE (SERVES 2-4)

Nutrition Facts

About 2.5 serv. per container

Serv. Size: 1 cup (202g)

Calories 420
per serving

Amount/Serving	%DV*	Amount/Serving	%DV*
Total Fat 22g	28%	Total Carb. 41g	15%
Sat. Fat 14g	70%	Dietary Fiber 3g	11%
Trans. Fat 0.5g		Total Sugars 3g	
Cholest. 60mg	20%	Incl. Og Added Sugars 0g	0%
Sodium 580mg	25%	Protein 16g	

Vitamin D 1mcg 6% • Calcium 437mg 35%
Iron 1mg 6% • Potassium 236mg 6%

*The % Daily Value (DV) tells you how much a nutrient in a serving of food contributes to a daily diet. 2,000 calories a day is used for general nutrition advice.

INGREDIENTS: Tomatoes (tomatoes, tomato puree, sea salt, citric acid), gluten free pasta (brown rice flour, water, potato starch, tapioca starch, whole egg, egg white, vinegar, xanthan gum, salt), ricotta cheese (pasteurized whey, pasteurized cream, vinegar, salt), cheese curds (pasteurized milk, culture, enzymes, salt), mozzarella cheese (cultured pasteurized milk, salt, enzymes), Flagship cheese (pasteurized milk, salt, culture, enzymes), spinach, water, extra virgin olive oil, olives (olives, water, sea salt), kale, garlic (garlic, water), sea salt, cane sugar, spices (thyme, oregano, black pepper, parsley, crushed red pepper), rice starch, cornstarch.

CONTAINS: Egg, milk.

ALLERGY INFORMATION: This product has been tested for less than 20ppm gluten.

CHEESE CURD LASAGNA WITH MEAT SAUCE

This savory ground beef and pork lasagna—with saucy layers of ricotta, mozzarella, and our signature Flagship, topped with melted cheese curds—is yet another “World’s Best” standard.



10 OZ SINGLE SERVE (SERVES 1)

See Single Serve section (page 61) for details.

23 OZ MULTI-SERVE (SERVES 2-4)

UPC CODE: 7-82045-10005-0

ITEM CODE: 10005 CASE GTIN: 10782045100057

UNIT DIMENSIONS: 8.88" × 1.53" × 6.69"

CASE DIMENSIONS: 14" × 9.56" × 7.19"

UNITS/CASE: Eight (8) 23 oz. pans

CASE CUBE: 0.557 ft³ CASE GROSS WEIGHT: 12.65 lb.

CASES/PALLET: 117 TI-HI: 13' × 9'

Nutrition Facts

About 3 serv. per container
Serv. Size: 1 cup (227g)

Calories 350
per serving

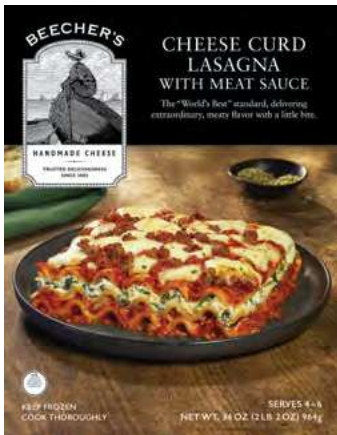
Amount/Serving	%DV*	Amount/Serving	%DV*
Total Fat 18g	23%	Total Carb. 32g	12%
Sat. Fat 11g	55%	Dietary Fiber 3g	11%
Trans. Fat 0.5g		Total Sugars 8g	
Cholest. 50mg	17%	Incl. 1g Added Sugars	2%
Sodium 820mg	36%	Protein 16g	

Vitamin D 0mcg 0% • Calcium 378mg 30%
Iron 2mg 10% • Potassium 503mg 10%

*The % Daily Value (DV) tells you how much a nutrient in a serving of food contributes to a daily diet. 2,000 calories a day is used for general nutrition advice.

INGREDIENTS: Tomatoes (tomatoes, tomato puree, sea salt, citric acid), cooked lasagna pasta (water, semolina [milled wheat], egg whites), ricotta cheese (pasteurized whey, pasteurized cream, vinegar, salt), cheese curds (pasteurized milk, culture, enzymes, salt), mozzarella cheese (cultured pasteurized milk, salt, enzymes), Flagship cheese (pasteurized milk, salt, culture, enzymes), spinach, water, extra virgin olive oil, olives (olives, water, sea salt), kale, garlic (garlic, water), sea salt, cane sugar, spices (oregano, thyme, black pepper, parsley, crushed red pepper), rice starch, corn starch.

CONTAINS: Wheat, milk, egg.



34 OZ MULTI-SERVE, FAMILY SIZE (SERVES 4-6)

UPC CODE: 7-82045-11770-6

ITEM CODE: 11770 CASE GTIN: 10782045117703

UNIT DIMENSIONS: 6.875" x 2.14" x 8.875"

CASE DIMENSIONS: 14.4375" x 9.5625" x 9.625"

UNITS/CASE: Twelve (12) 34 oz. pans

CASE CUBE: 0.991 ft³ CASE GROSS WEIGHT: 26 lb.

CASES/PALLET: 64 TI-HI: 8' x 8'

Nutrition Facts

Amount/Serving	%DV*	Amount/Serving	%DV*
Total Fat 14g	18%	Total Carb. 29g	11%
Sat. Fat 7g	35%	Dietary Fiber 4g	14%
Trans. Fat 0g		Total Sugars 7g	
Cholest. 40mg	13%	Incl. 4g Added Sugars	8%
Sodium 1040mg	45%	Protein 13g	

Calories per serving 290

Vitamin D 0mcg 0% • Calcium 326mg 25%
Iron 2mg 10% • Potassium 432mg 10%

*The % Daily Value (DV) tells you how much a nutrient in a serving of food contributes to a daily diet. 2,000 calories a day is used for general nutrition advice.

INGREDIENTS: Diced tomatoes (tomatoes, tomato juice, citric acid), cooked lasagna noodles (semolina [milled wheat], water, whole egg), water, ricotta cheese (pasteurized whey, cream and milk), tomato paste, part-skim mozzarella cheese (pasteurized part-skim milk, cheese cultures, salt, enzymes), cheese curds (pasteurized milk, salt, culture, enzymes), ground beef, ground pork, cheddar cheese (pasteurized milk, salt, culture, enzymes), cooked Italian sausage (pork, spices, water, salt, sugar, natural flavorings, paprika), spinach, sea salt, black olives (manzanilla olives, water, sea salt), extra virgin olive oil, evaporated cane juice, garlic, spices, kale, rice starch, rice vinegar, dehydrated onion, dehydrated garlic, paprika, thyme, non-GMO corn starch.

CONTAINS: Wheat, milk, egg.

PASTA BOLOGNESE

Our elevated take on this penne noodle classic is generous with cheese and rich on flavor: hearty vegetables, herbs, beef and pork mixed with Beecher's signature red sauce deliver bright, meaty flavor in every savory bite.



PRODUCT SPECS



UPC CODE: 7-82045-11772-0

ITEM CODE: 11772

CASE GTIN: 10782045117727

PACK SIZE: 20 OZ.

UNIT DIMENSIONS:
8.88" x 1.53" x 6.69"

CASE DIMENSIONS:
14" x 9.56" x 7.19"

UNITS/CASE:
Eight (8) 20 oz. pans

CASE CUBE: 0.557 ft³

CASE GROSS WEIGHT: 11.15 lb.

CASES/PALLET: 117

TI-HI: 13' x 9'

20 OZ MULTI-SERVE (SERVES 2-4)

Nutrition Facts

2.5 serv. per container
Serv. Size: 1 cup (226g)

Calories 330
per serving

Amount/Serving	%DV*	Amount/Serving	%DV*
Total Fat 15g	19%	Total Carb. 38g	14%
Sat. Fat 6g	30%	Dietary Fiber 5g	18%
Trans. Fat 0g		Total Sugars 7g	
Cholest. 25mg	8%	Incl. 1g Added Sugars	2%
Sodium 830mg	36%	Protein 13g	

Vitamin D 1mcg 6% • Calcium 142mg 10%
Iron 3mg 15% • Potassium 615mg 15%

*The % Daily Value (DV) tells you how much a nutrient in a serving of food contributes to a daily diet. 2,000 calories a day is used for general nutrition advice.

INGREDIENTS: Cooked enriched penne rigate (water, durum wheat semolina, niacin, iron, thiamin mononitrate, riboflavin, folic acid), tomatoes (tomato puree, citric acid), milk (vitamin D₃ added), water, cooked beef, cooked pork, cheddar cheese (pasteurized milk, salt, culture, enzymes), onion, extra virgin olive oil, carrots, celery, tomato paste, beef fat, salt, burgundy wine, dehydrated onion, spices (paprika, black pepper, oregano, fennel, parsley, thyme, crushed red pepper), cane sugar, dehydrated garlic, rice starch.

CONTAINS: Wheat, milk.

BAKED ZITI

In signature Beecher's style, our Baked Ziti doubles-down on deliciousness. This classic saucy noodle dish is packed with added layers of cheese, herbs, and a bright tomato flavor that stands alone for an easy—yet remarkable—hearty meal.



PRODUCT SPECS



UPC CODE: 7-82045-11509-2

ITEM CODE: 11509

CASE GTIN: 10782045115099

PACK SIZE: 20 OZ.

UNIT DIMENSIONS:
8.88" x 1.53" x 6.69"

CASE DIMENSIONS:
14" x 9.56" x 7.19"

UNITS/CASE:
Eight (8) 20 oz. pans

CASE CUBE: 0.557 ft³

CASE GROSS WEIGHT: 11.15 lb.

CASES/PALLET: 117

TI-HI: 13' x 9'

20 OZ MULTI-SERVE (SERVES 2-4)

Nutrition Facts

About 2.5 serv. per container

Serv. Size: 1cup (226g)

Calories 330
per serving

Amount/Serving	%DV*	Amount/Serving	%DV*
Total Fat 16g	21%	Total Carb. 32g	12%
Sat. Fat 9g	45%	Dietary Fiber 4g	14%
Trans. Fat 0g		Total Sugars 7g	
Cholest. 40mg	13%	Incl. 1g Added Sugars	2%
Sodium 1070mg	47%	Protein 16g	

Vitamin D 1mcg 6% • Calcium 385mg 30%
Iron 2mg 10% • Potassium 486mg 10%

*The % Daily Value (DV) tells you how much a nutrient in a serving of food contributes to a daily diet. 2,000 calories a day is used for general nutrition advice.

INGREDIENTS: Tomatoes (tomatoes, tomato puree, citric acid), cooked enriched penne rigate (water, durum wheat semolina, niacin, iron, thiamin mononitrate, riboflavin, folic acid), milk (vitamin D₃ added), mozzarella cheese (pasteurized milk, cheese cultures, salt, enzymes), water, jack cheese (pasteurized milk, salt, culture, enzymes), Romano cheese (pasteurized sheep's milk, cheese cultures, salt, enzymes), parmesan cheese (pasteurized part-skim milk, cheese culture, salt, enzymes), extra virgin olive oil, sea salt, spices (oregano, parsley, fennel, crushed red pepper, black pepper, rosemary, thyme, white pepper, basil), garlic (garlic, water), rice starch, cane sugar, rice flour, dehydrated onion, dehydrated garlic.

CONTAINS: Wheat, milk.

BROCCOLI IN CHEESE SAUCE

Nothing beats tender, flavorful broccoli in our rich and creamy Flagship cheese sauce—a Beecher’s fan favorite.



PRODUCT SPECS



UPC CODE: 7-82045-11768-3

ITEM CODE: 11768

CASE GTIN: 10782045117680

PACK SIZE: 14 OZ.

UNIT DIMENSIONS:
8.84" × 1.72" × 6.875"

CASE DIMENSIONS:
14.625" × 9" × 7.25"

UNITS/CASE:
Eight (8) 14 oz. pans

CASE CUBE: 0.552 ft³

CASE GROSS WEIGHT: 8 lb.

CASES/PALLET: 117

TI-HI: 13' × 9'

14 OZ MULTI-SERVE (SERVES 2-4)

Nutrition Facts

3 servings per container
Serv. Size: 1/2 cup (132g)

Calories 140
per serving

Amount/Serving	%DV*	Amount/Serving	%DV*
Total Fat 9g	12%	Total Carb. 7g	3%
Sat. Fat 6g	30%	Dietary Fiber 2g	7%
Trans. Fat 0g		Total Sugars 2g	
Cholest. 25mg	8%	Incl. 0g Added Sugars	0%
Sodium 370mg	16%	Protein 8g	

Vitamin D 0mcg 0% • Calcium 231mg 20%
Iron 1mg 6% • Potassium 317mg 6%

*The % Daily Value (DV) tells you how much a nutrient in a serving of food contributes to a daily diet. 2,000 calories a day is used for general nutrition advice.

INGREDIENTS: Broccoli, milk (vitamin D₃ added), cheddar cheese (pasteurized milk, salt, culture, enzymes), water, jack cheese (pasteurized milk, salt, culture, enzymes), rice starch, butter (cream, salt), salt, chipotle in adobo puree (red chile, water, chipotles [smoked red jalapeño], apple cider vinegar, lime juice, rice flour, sea salt, garlic, onion, honey, rosemary, thyme, sage, bay leaves), rice flour, lemon juice, dehydrated garlic, thyme, smoked paprika, spices, lemon oil.

CONTAINS: Milk.

CAULIFLOWER IN CHEESE SAUCE

Featuring our fan-favorite Flagship sauce, this delightfully crunchy cauliflower is sure to become a new dinnertime staple.



PRODUCT SPECS



UPC CODE: 7-82045-11769-0

ITEM CODE: 11769

CASE GTIN: 10782045117697

PACK SIZE: 14 OZ.

UNIT DIMENSIONS:
8.84" × 1.72" × 6.875"

CASE DIMENSIONS:
14.625" × 9" × 7.25"

UNITS/CASE:
Eight (8) 14 oz. pans

CASE CUBE: 0.552 ft³

CASE GROSS WEIGHT: 8 lb.

CASES/PALLET: 117

TI-HI: 13' × 9'

14 OZ MULTI-SERVE (SERVES 2-4)

Nutrition Facts

3 servings per container
Serv. Size: ½ cup (132g)

Calories 140
per serving

Amount/Serving	%DV*	Amount/Serving	%DV*
Total Fat 9g	12%	Total Carb. 7g	3%
Sat. Fat 6g	30%	Dietary Fiber 2g	7%
Trans. Fat 0g		Total Sugars 3g	
Cholest. 25mg	8%	Incl. Og Added Sugars 0%	
Sodium 380mg	17%	Protein 7g	

Vitamin D 0mcg 0% • Calcium 210mg 15%
Iron 0mg 0% • Potassium 211mg 4%

*The % Daily Value (DV) tells you how much a nutrient in a serving of food contributes to a daily diet. 2,000 calories a day is used for general nutrition advice.

INGREDIENTS: Cauliflower, milk (vitamin D₃ added), cheddar cheese (pasteurized milk, salt, culture, enzymes), water, jack cheese (pasteurized milk, salt, culture, enzymes), Romano cheese (pasteurized cow's milk, cheese cultures, salt, enzymes), rice starch, butter (cream, salt), salt, chipotle in adobo puree (red chile, water, chipotles [smoked red jalapeño], apple cider vinegar, lime juice, rice flour, sea salt, garlic, onion, honey, rosemary, thyme, sage, bay leaves), rice flour, lemon juice, dehydrated garlic, thyme, smoked paprika, spices.

CONTAINS: Milk.



GLUTEN FREE



VEGETARIAN

STREET CORN

Dig into our delicious twist on Mexican Street Corn: Flagship cheese sauce mixes with the snappy sweetness of corn and light serrano pepper heat, balanced by lime and Cotija cheese.



AWARDS

2023 SOFI Award, Gold

2022 SOFI Award, Best New Product

PRODUCT SPECS



UPC CODE: 7-82045-11500-9

ITEM CODE: 11500

CASE GTIN: 10782045115006

PACK SIZE: 18 oz.

UNIT DIMENSIONS:
8.88" x 1.53" x 6.69"

CASE DIMENSIONS:
14" x 9.56" x 7.19"

UNITS/CASE:
Eight (8) 18 oz. pans

CASE CUBE: 0.557 ft³

CASE GROSS WEIGHT: 11.63 lb.

CASES/PALLET: 117

TI-HI: 13' x 9'

18 OZ MULTI-SERVE (SERVES 2-4)

Nutrition Facts

About 4.5 serv. per container
Serv. Size: $\frac{3}{4}$ cup (110g)

Calories 120
per serving

Amount/Serving	%DV*	Amount/Serving	%DV*
Total Fat 5g	6%	Total Carb. 15g	5%
Sat. Fat 3g	15%	Dietary Fiber 2g	7%
Trans. Fat 0g		Total Sugars 3g	
Cholest. 15mg	5%	Incl. Og Added Sugars 0%	
Sodium 200mg	9%	Protein 5g	

Vitamin D 0mcg 0% • Calcium 112mg 8%
Iron 0mg 0% • Potassium 215mg 4%

*The % Daily Value (DV) tells you how much a nutrient in a serving of food contributes to a daily diet. 2,000 calories a day is used for general nutrition advice.

INGREDIENTS: Corn, roasted red onion, milk (vitamin D₃ added), Cotija cheese (pasteurized cow's milk, cheese culture, salt, enzymes), green onion, cheddar cheese (pasteurized milk, salt, culture, enzymes), red bell pepper, jack cheese (pasteurized milk, salt, culture, enzymes), water, serrano pepper, cilantro, rice starch, butter (cream, salt), crystallized lime (citric acid, natural lime flavor [maltodextrin, sugar, lime oil, lime juice concentrate]), salt, chipotle puree (red chile, water, chipotles [smoked red jalapeño], apple cider vinegar, lime juice, rice flour, sea salt, garlic, onion, honey, rosemary, thyme, sage, bay leaves), rice flour, dehydrated garlic, parsley.

CONTAINS: Milk.

ALLERGY INFORMATION: This product has been tested for less than 20ppm gluten.

CACIO E PEPE

Packing deep, robust flavor into a convenient single-serve dish, Beecher's Cacio e Pepe delivers an extraordinary journey for the tastebuds—owing to a creamy sauce of rich, sharp cheese folded with a hint of peppercorn into penne pasta.

Our single serve packaging can be displayed horizontally or vertically.



PRODUCT SPECS



UPC CODE: 7-82045-10047-0

ITEM CODE: 10047

CASE GTIN: 10782045100477

PACK SIZE: 9 OZ.

UNIT DIMENSIONS:
4.94" x 1.63" x 6.56"

CASE DIMENSIONS:
10.38" x 6.75" x 7.31"

UNITS/CASE:
Eight (8) 9 oz. pans

CASE CUBE: 0.296 ft³

CASE GROSS WEIGHT: 5 lb.

CASES/PALLET: 198

TI-HI: 22' x 9'

9 OZ SINGLE SERVE (SERVES 1)

Nutrition Facts

1 serving per container
Serv. Size: 1 tray (255g)

Calories 520
per serving

Amount/Serving	%DV*	Amount/Serving	%DV*
Total Fat 26g	33%	Total Carb. 48g	17%
Sat. Fat 16g	80%	Dietary Fiber 5g	18%
Trans. Fat 0.5g		Total Sugars 5g	
Cholest. 80mg	27%	Incl. 0g Added Sugars	0%
Sodium 920mg	40%	Protein 25g	

Vitamin D 1mcg 6% • Calcium 613mg 45%
Iron 2mg 10% • Potassium 354mg 8%

*The % Daily Value (DV) tells you how much a nutrient in a serving of food contributes to a daily diet. 2,000 calories a day is used for general nutrition advice.

INGREDIENTS: Cooked enriched penne rigate (water, durum wheat semolina, niacin, iron, thiamin mononitrate, riboflavin, folic acid), milk (vitamin D₃ added), peppercorn cheese (pasteurized milk, salt, pepper, culture, enzymes), cheddar cheese (pasteurized milk, salt, culture, enzymes), Romano cheese (pasteurized part-skim cow's milk, cheese culture, salt, enzymes), rice flour, water, butter (cream, salt), salt, green and black peppercorns, chipotle puree (red chile, water, chipotles [smoked red jalapeño], apple cider vinegar, lime juice, rice flour, sea salt, garlic, onion, honey, rosemary, thyme, sage, bay leaves), dehydrated garlic.

CONTAINS: Wheat, milk.

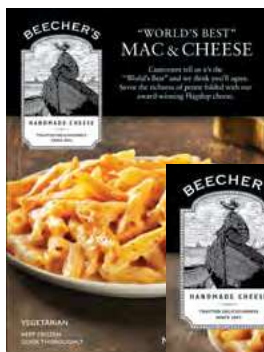


SINGLE-SERVE

“WORLD’S BEST” MAC & CHEESE

Savor the richness of penne folded with an incomparable combination of award-winning Flagship and Just Jack cheeses. A top secret spice blend completes the recipe.

Our single serve packaging can be displayed horizontally or vertically.



AWARDS

2023 Tasting Table,
Best Frozen Mac & Cheese

2023 *Food and Wine*,
Best Mac & Cheese in the U.S.

2020 SOFI Award, Gold Winner

PRODUCT SPECS



UPC CODE: 7-82045-10044-9

ITEM CODE: 10044

CASE GTIN: 10782045100446

PACK SIZE: 9 OZ.

UNIT DIMENSIONS:
4.94" × 1.63" × 6.56"

CASE DIMENSIONS:
10.38" × 6.75" × 7.31"

UNITS/CASE:

Eight (8) 9 oz. pans

CASE CUBE: 0.296 ft³

CASE WEIGHT: 5 lb.

CASES/PALLET: 198

TI-HI: 22' × 9'

9 OZ SINGLE SERVE (SERVES 1)

Nutrition Facts

1 serving per container
Serv. Size: 1 tray (255g)

Calories 530
per serving

Amount/Serving	%DV*	Amount/Serving	%DV*
Total Fat 27g	35%	Total Carb. 47g	17%
Sat. Fat 17g	85%	Dietary Fiber 4g	14%
Trans. Fat 0.5g		Total Sugars 5g	
Cholest. 80mg	27%	Incl. 0g Added Sugars	0%
Sodium 730mg	32%	Protein 24g	

Vitamin D 1mcg 6% • Calcium 561mg 45%
Iron 2mg 10% • Potassium 339mg 8%

*The % Daily Value (DV) tells you how much a nutrient in a serving of food contributes to a daily diet. 2,000 calories a day is used for general nutrition advice.

INGREDIENTS: Cooked enriched penne rigate (water, durum wheat semolina, niacin, iron, thiamin mononitrate, riboflavin, folic acid), milk (vitamin D₃ added), Flagship cheese (pasteurized milk, salt, culture, enzymes), Just Jack cheese (pasteurized milk, salt, culture, enzymes), water, rice flour, butter (cream, salt), chipotle puree (chipotle peppers, water, tomato paste, sugar, contains 2% or less sunflower seed oil, onion, cornstarch, vinegar, salt, paprika, garlic, spices), salt, chili powder (chili pepper and other spices, salt, garlic powder), dehydrated garlic.

CONTAINS: Wheat, milk.

 GLUTEN FREE

 VEGETARIAN

“WORLD’S BEST” MAC & CHEESE

This gluten-free alternative to our popular original delivers the same creamy flavor, featuring our award-winning Flagship and Just Jack cheeses, rice penne pasta and a hint of spice.

Our single serve packaging can be displayed horizontally or vertically.



SINGLE-SERVE

PRODUCT SPECS



UPC CODE: 7-82045-10046-3

ITEM CODE: 10046

CASE GTIN: 10782045100460

PACK SIZE: 9 OZ.

UNIT DIMENSIONS:
4.94" x 1.63" x 6.56"

CASE DIMENSIONS:
10.38" x 6.75" x 7.31"

UNITS/CASE:
Eight (8) 9 oz. pans

CASE CUBE: 0.296 ft³

CASE GROSS WEIGHT: 5 lb.

CASES/PALLET: 198

TI-HI: 22' x 9'

9 OZ SINGLE SERVE (SERVES 1)

Nutrition Facts

1 serving per container
Serv. Size: 1 tray (255g)

Calories 530
per serving

Amount/Serving	%DV*	Amount/Serving	%DV*
Total Fat 27g	35%	Total Carb. 51g	19%
Sat. Fat 17g	85%	Dietary Fiber 3g	11%
Trans. Fat 0.5g		Total Sugars 4g	
Cholest. 80mg	27%	Incl. Og Added Sugars 0%	
Sodium 730mg	32%	Protein 20g	

Vitamin D 1mcg 6% • Calcium 551mg 40%
Iron 1mg 6% • Potassium 298mg 6%

*The % Daily Value (DV) tells you how much a nutrient in a serving of food contributes to a daily diet. 2,000 calories a day is used for general nutrition advice.

INGREDIENTS: Gluten-free penne pasta (water, corn flour, white rice flour), milk (vitamin D₃ added), cheddar cheese (pasteurized milk, salt, culture, enzymes), jack cheese (pasteurized milk, salt, culture, enzymes), water, rice flour, butter (cream, salt), chipotle puree (red chile, water, chipotles [smoked red jalapeño], apple cider vinegar, lime juice, rice flour, sea salt, garlic, onion, honey, rosemary, thyme, sage, bay leaves), salt, chili powder (chili pepper and other spices, salt, garlic powder), dehydrated garlic.

CONTAINS: Milk.

ALLERGY INFORMATION: This product has been tested for less than 20ppm gluten.

CHEESE CURD LASAGNA

We're confident this single-serve lasagna is another "World's Best" winner, just like our unrivaled Mac. It's topped with cheese curds and filled with a bright tomato sauce—plus three additional cheeses, including our signature Flagship cheese.

Our single serve packaging can be displayed horizontally or vertically.



SINGLE-SERVE

PRODUCT SPECS



UPC CODE: 7-82045-11767-6
 ITEM CODE: 11767
 CASE GTIN: 10782045117673
 PACK SIZE: 10 OZ.
 UNIT DIMENSIONS:
 4.94" x 1.63" x 6.56"
 CASE DIMENSIONS:
 10.38" x 6.75" x 7.31"
 UNITS/CASE:
 Eight (8) 10 oz. pans
 CASE CUBE: 0.296 ft³
 CASE GROSS WEIGHT: 5 lb.
 CASES/PALLET: 198
 TI-HI: 22' x 9'

10 OZ SINGLE SERVE (SERVES 1)

Nutrition Facts

1 serving per container
Serv. Size: 1 tray (283g)

Calories 420

Amount/Serving	%DV*	Amount/Serving	%DV*
Total Fat 21g	27%	Total Carb. 41g	15%
Sat. Fat 12g	60%	Dietary Fiber 5g	18%
Trans. Fat 0g		Total Sugars 14g	
Cholest. 55mg	18%	Incl. 9g Added Sugars 18%	
Sodium 1600mg	70%	Protein 18g	

*The % Daily Value (DV) tells you how much a nutrient in a serving of food contributes to a daily diet. 2,000 calories a day is used for general nutrition advice.

INGREDIENTS: Diced tomatoes (tomatoes, tomato juice, citric acid), water, cooked lasagna noodles (semolina [milled wheat], water, whole egg), ricotta cheese (pasteurized whey, cream and milk), cheese curds (pasteurized milk, salt, culture, enzymes), tomato paste, part-skim mozzarella cheese (pasteurized part-skim milk, cheese cultures, salt, enzymes), cheddar cheese (pasteurized milk, salt, culture, enzymes), spinach, black olives (manzanilla olives, water, sea salt), sea salt, extra virgin olive oil, evaporated cane juice, kale, garlic, spices, rice starch, rice vinegar, thyme, non-GMO corn starch, dehydrated garlic.

CONTAINS: Wheat, milk, egg.

CHEESE CURD LASAGNA WITH MEAT SAUCE

With savory ground beef and pork tucked into cheese-filled layers of bright tomato sauce, this lasagna topped with cheese curds delivers “World’s Best” deliciousness in a handy, single serve dish.

Our single serve packaging can be displayed horizontally or vertically.



PRODUCT SPECS



7 82045 11766 9

UPC CODE: 7-82045-11766-9

ITEM CODE: 11766

CASE GTIN: 10782045117666

PACK SIZE: 10 OZ.

UNIT DIMENSIONS:
4.94" × 1.63" × 6.56"

CASE DIMENSIONS:
10.38" × 6.75" × 7.31"

UNITS/CASE:
Eight (8) 9 oz. pans

CASE CUBE: 0.296 ft³

CASE GROSS WEIGHT: 5 lb.

CASES/PALLET: 198

TI-HI: 22' × 9'

10 OZ SINGLE SERVE (SERVES 1)

Nutrition Facts

1 serving per container
Serv. Size: 1 tray (283g)

Calories 470

Amount/Serving %DV*

Total Fat 24g 31%

Sat. Fat 12g 60%

Trans. Fat 0g

Cholest. 65mg 22%

Sodium 1570mg 68%

Amount/Serving %DV*

Total Carb. 40g 15%

Dietary Fiber 5g 18%

Total Sugars 11g

Incl. 6g Added Sugars 12%

Protein 23g

*The % Daily Value (DV) tells you how much a nutrient in a serving of food contributes to a daily diet. 2,000 calories a day is used for general nutrition advice.

Vitamin D 0mcg 0% • Calcium 570mg 45%
Iron 3mg 15% • Potassium 603mg 15%

INGREDIENTS: Diced tomatoes (tomatoes, tomato juice, citric acid), cooked lasagna noodles (semolina [milled wheat], water, whole egg), water, part-skim mozzarella cheese (pasteurized part-skim milk, cheese cultures, salt, enzymes), ricotta cheese (pasteurized whey, cream and milk), cheese curds (pasteurized milk, salt, culture, enzymes), tomato paste, ground beef, cooked Italian sausage (pork, spices, water, salt, sugar, natural flavorings, paprika), ground pork, cheddar cheese (pasteurized milk, salt, culture, enzymes), spinach, black olives (manzanilla olives, water, sea salt), sea salt, extra virgin olive oil, evaporated cane juice, garlic, kale, spices, rice starch, rice vinegar, dehydrated garlic, dehydrated onion, paprika, thyme, non-GMO corn starch.

CONTAINS: Wheat, milk, egg.

FLAGSHIP SAUCE

Each batch starts with a hand-stirred béchamel sauce, enhanced by an incomparable combination of our award-winning Beecher's Flagship and Just Jack cheeses—creating a robust, nutty flavor with a smooth, creamy balance.

Serving suggestion.



PRODUCT SPECS



UPC CODE: 7-82045-11286-2

ITEM CODE: 100000

CASE GTIN: 10782045112869

PACK SIZE: 5 lb.

UNIT DIMENSIONS: —

CASE DIMENSIONS:
12" x 10.88" x 6.88"

UNITS/CASE: Two (2) 5 lb. bags

CASE CUBE: 0.52 ft³

CASE GROSS WEIGHT: 13.5 lb.

CASES/PALLET: 60

TI-HI: 12' x 5'

5 LB BAG FOOD SERVICE (SERVINGS VARY)

INGREDIENTS: Milk (Vitamin D₃ added), cheddar cheese (pasteurized milk, salt, culture, enzymes), jack cheese (pasteurized milk, salt, culture, enzymes), water, rice starch, butter (cream, salt), chipotle puree (red chile, water, chipotles [smoked red jalapeño], apple cider vinegar, lime juice, rice flour, sea salt, garlic, onion, honey, rosemary, thyme, sage, bay leaves), salt, rice flour, dehydrated garlic.

CONTAINS: Milk.

SOUPS



 GLUTEN FREE

 VEGETARIAN

TOMATO CHEDDAR SOUP

Indulge in this comfort food classic, packed with umami flavor from artisan cheese and tangy tomato— an enjoyable, quick and convenient vegetarian meal that's also gluten-free.



Beecher's pouches are produced using significantly less water and fossil fuels than standard plastic tubs, and require only one-third the amount of material— yielding almost a 40% reduction in greenhouse gas emissions.

16 OZ FROZEN/SLACK MULTI-SERVE (SERVES 2)

UPC CODE: 7-82045-10087-6

ITEM CODE: 10087 CASE GTIN: 10782045100873

UNIT DIMENSIONS: 5.7" x 2.75" x 8.07"

CASE DIMENSIONS: 14.6" x 7.67" x 8.66"

UNITS/CASE: Eight (8) 16 oz. pouches

CASE CUBE: 0.56 ft³ CASE GROSS WT: 9.5 lb.

CASES/PALLET: 105 TI-HI: 15' x 7'

Nutrition Facts

1 serving per container

Serving Size:

1 package (453g)

Calories 400
per serving

Amount/Serving	%DV*	Amount/Serving	%DV*
Total Fat 27g	35%	Total Carb. 27g	10%
Sat. Fat 17g	85%	Dietary Fiber 8g	29%
Trans Fat 1g		Total Sugars 13g	
Cholest. 80mg	27%	Incl. Og Added Sugars 0%	
Sodium 1460mg	63%	Protein 17g	

Vitamin D 0mcg 0% • Calcium 427mg 35%
Iron 1mg 6% • Potassium 1338mg 30%

*The % Daily Value (DV) tells you how much a nutrient in a serving of food contributes to a daily diet. 2,000 calories a day is used for general nutrition advice.

INGREDIENTS: Ground tomatoes (tomatoes, tomato puree, salt), water, cheddar cheese (pasteurized milk, salt, culture, enzymes), onions, heavy cream, white wine (sulphites), contains 2 percent or less of: butter (cream), garlic puree, sea salt, non-GMO canola oil, spice. **CONTAINS:** Milk.



20 OZ FROZEN MULTI-SERVE (SERVES 2-4)

UPC CODE: 7-82045-10067-8

ITEM CODE: 10067

CASE GTIN: 10782045100675

UNIT DIMENSIONS: 5.75" x 2" x 6.25"

CASE DIMENSIONS:

12.125" x 8.6875" x 7.1875"

UNITS/CASE: Eight (8) 20 oz. boxes CASE CUBE: 0.44 ft³

CASE GROSS WT: 10.5 lb. CASES/PALLET: 128 TI-HI: 16' x 8'

INGREDIENTS: Ground tomatoes (tomatoes, tomato puree, salt), water, cheddar cheese (pasteurized milk, salt, culture, enzymes), onions, heavy cream, white wine (sulphites), contains 2 percent or less of: butter (cream), garlic puree, sea salt, non-GMO canola oil, spice. **CONTAINS:** Milk.

Nutrition Facts

About 2.5 serv. per container
Serv. Size: 1 cup (245g)

Calories 220
 per serving

Amount/Serving	%DV*	Amount/Serving	%DV*
Total Fat 14g	18%	Total Carb. 15g	5%
Sat. Fat 9g	45%	Dietary Fiber 4g	14%
Trans Fat 0.5g		Total Sugars 7g	
Cholest. 45mg	15%	Incl. Og Added Sugars 0%	
Sodium 790mg	34%	Protein 9g	

Vitamin D 0mcg 0% • Calcium 231mg 20%
 Iron 1mg 6% • Potassium 723mg 15%

*The % Daily Value (DV) tells you how much a nutrient in a serving of food contributes to a daily diet. 2,000 calories a day is used for general nutrition advice.

4 LB FOOD SERVICE (SERVINGS VARY)

UPC CODE: 7-82045-10080-7

ITEM CODE: 10080

CASE GTIN: 10782045100804

UNIT DIMENSIONS: 11" x 9.8" x 1.2"

CASE DIMENSIONS: 8.62" x 11.81" x 12.8"

UNITS/CASE: Six (6) 4 lb. bags CASE CUBE: 0.75 ft³

CASE GROSS WT: 25.03 lb. CASES/PALLET: 104 TI-HI: 13' x 8'

INGREDIENTS: Ground tomatoes (tomatoes, tomato puree, salt), water, cheddar cheese (pasteurized milk, salt, culture, enzymes), onions, heavy cream, white wine (sulphites), contains 2 percent or less of: butter (cream), garlic puree, sea salt, non-GMO canola oil, spice. **CONTAINS:** Milk.

Nutrition Facts

Servings: Varied
Serv. Size: 1 cup (245g)

Calories 220
 per serving

Amount/Serving	%DV*	Amount/Serving	%DV*
Total Fat 14g	18%	Total Carb. 15g	5%
Sat. Fat 9g	45%	Dietary Fiber 4g	14%
Trans Fat 0.5g		Total Sugars 7g	
Cholest. 45mg	15%	Incl. Og Added Sugars 0%	
Sodium 790mg	34%	Protein 9g	

Vitamin D 0mcg 0% • Calcium 231mg 20%
 Iron 1mg 6% • Potassium 723mg 15%

*The % Daily Value (DV) tells you how much a nutrient in a serving of food contributes to a daily diet. 2,000 calories a day is used for general nutrition advice.

 GLUTEN FREE

 VEGETARIAN

SMOKY CAULIFLOWER BISQUE

Our Smoky Cauliflower Bisque is both delicious and satisfying. Roasted cauliflower is the star in this rich and creamy dish—a quick and convenient vegetarian meal that’s also gluten-free.



Beecher's pouches are produced using significantly less water and fossil fuels than standard plastic tubs, and require only one-third the amount of material—yielding almost a 40% reduction in greenhouse gas emissions.

16 OZ FROZEN/SLACK MULTI-SERVE (SERVES 2)

UPC CODE: 7-82045-10088-3

ITEM CODE: 10088 CASE GTIN: 10782045100880

UNIT DIMENSIONS: 5.7" x 2.75" x 8.07"

CASE DIMENSIONS: 14.6" x 7.67" x 8.66"

UNITS/CASE: Eight (8) 16 oz. pouches

CASE CUBE: 0.56 ft³ CASE GROSS WT: 9.5 lb.

CASES/PALLET: 105 TI-HI: 15' x 7'

Nutrition Facts

1 serving per container

Serving Size:

1 package (453g)

Calories 350
per serving

Amount/Serving %DV*

Total Fat 19g 24%

Sat. Fat 11g 55%

Trans Fat 0.5g

Cholest. 60mg 20%

Sodium 1680mg 73%

Vitamin D 0mcg 0%

Iron 0mg 0%

Amount/Serving %DV*

Total Carb. 33g 12%

Dietary Fiber 6g 21%

Total Sugars 16g

Incl. To Added Sugars 14%

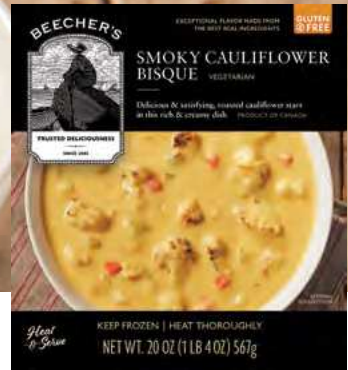
Protein 15g

Calcium 391mg 30%

Potassium 1041mg 20%

*The % Daily Value (DV) tells you how much a nutrient in a serving of food contributes to a daily diet. 2,000 calories a day is used for general nutrition advice.

INGREDIENTS: Vegetable stock (water, vegetable stock concentrate [non-GMO potato starch, carrots, salt, cane sugar, celery, onions, onion powder, garlic powder, spices, celeriac, green peas, spinach, lettuce and/or chicory, red beet]), cauliflower, milk, non-GMO potatoes, onions, carrots, cheddar cheese (pasteurized milk, salt, culture, enzymes), smoked cheddar cheese (pasteurized milk, salt, culture, enzymes), celery, contains 2 percent or less of: butter (cream), whey powder, whey protein concentrate, sea salt, non-GMO modified corn starch, garlic puree, non-GMO canola oil, apple cider vinegar, honey, smoked paprika, granulated garlic, chili powder (spices, salt, garlic powder), celery salt (salt, spices), spices. **CONTAINS:** Milk.



20 OZ FROZEN MULTI-SERVE (SERVES 2-4)

UPC CODE: 7-82045-10066-1

ITEM CODE: 10066

CASE GTIN: 10782045100668

UNIT DIMENSIONS: 5.75" x 2" x 6.25"

CASE DIM.: 12.125" x 8.6875" x 7.1875"

UNITS/CASE: Eight (8) 20 oz. boxes

CASE CUBE: 0.44 ft³ CASE GROSS WT: 10.5 lb. CASES/PALLET: 128 TI-HI: 16' x 8'

INGREDIENTS: Vegetable stock (water, vegetable stock concentrate [non-GMO potato starch, carrots, salt, cane sugar, celery, onions, onion powder, garlic powder, spices, celeriac, green peas, spinach, lettuce and/or chicory, red beet]), cauliflower, milk, non-GMO potatoes, onions, carrots, cheddar cheese (pasteurized milk, salt, culture, enzymes), smoked cheddar cheese (pasteurized milk, salt, culture, enzymes), celery, contains 2 percent or less of: butter (cream), whey powder, whey protein concentrate, sea salt, non-GMO modified corn starch, garlic puree, non-GMO canola oil, apple cider vinegar, honey, smoked paprika, granulated garlic, chili powder (spices, salt, garlic powder), celery salt (salt, spices), spices. **CONTAINS:** Milk.

Nutrition Facts

About 25 serv. per container
Serv. Size: 1 cup (245g)

Calories 190
 per serving

Amount/Serving	%DV*	Amount/Serving	%DV*
Total Fat 10g	13%	Total Carb. 18g	7%
Sat. Fat 6g	30%	Dietary Fiber 3g	11%
Trans Fat 0g		Total Sugars 9g	
Cholest. 35mg	12%	Incl. 4g Added Sugars	8%
Sodium 910mg	40%	Protein 8g	

Vitamin D 0mcg 0% • Calcium 211mg 15%
 Iron 0mg 0% • Potassium 562mg 10%

*The % Daily Value (DV) tells you how much a nutrient in a serving of food contributes to a daily diet. 2,000 calories a day is used for general nutrition advice.

4 LB FOOD SERVICE (SERVINGS VARY)

UPC CODE: 7-82045-10078-4

ITEM CODE: 10081

CASE GTIN: 10782045100781

UNIT DIMENSIONS: 11" x 9.8" x 1.2"

CASE DIMENSIONS: 8.62" x 11.81" x 12.8" UNITS/CASE: Six (6) 4 lb. bags

CASE CUBE: 0.75 ft³ CASE GROSS WT: 25.03 lb. CASES/PALLET: 104 TI-HI: 13' x 8'

INGREDIENTS: Vegetable stock (water, vegetable stock concentrate [non-GMO potato starch, carrots, salt, cane sugar, celery, onions, onion powder, garlic powder, spices, celeriac, green peas, spinach, lettuce and/or chicory, red beet]), cauliflower, milk, non-GMO potatoes, onions, carrots, cheddar cheese (pasteurized milk, salt, culture, enzymes), smoked cheddar cheese (pasteurized milk, salt, culture, enzymes), celery, contains 2 percent or less of: butter (cream), whey powder, whey protein concentrate, sea salt, non-GMO modified corn starch, garlic puree, non-GMO canola oil, apple cider vinegar, honey, smoked paprika, granulated garlic, chili powder (spices, salt, garlic powder), celery salt (salt, spices), spices. **CONTAINS:** Milk.

Nutrition Facts

Servings: Varied
Serv. Size: 1 cup (245g)

Calories 190
 per serving

Amount/Serving	%DV*	Amount/Serving	%DV*
Total Fat 10g	13%	Total Carb. 18g	7%
Sat. Fat 6g	30%	Dietary Fiber 3g	11%
Trans Fat 0g		Total Sugars 9g	
Cholest. 35mg	12%	Incl. 4g Added Sugars	8%
Sodium 910mg	40%	Protein 8g	

Vitamin D 0mcg 0% • Calcium 211mg 15%
 Iron 0mg 0% • Potassium 562mg 10%

*The % Daily Value (DV) tells you how much a nutrient in a serving of food contributes to a daily diet. 2,000 calories a day is used for general nutrition advice.

 GLUTEN FREE

 VEGAN  MILK-FREE

RED LENTIL SOUP

Nutty red lentils balance with tomatoes and spices in a flavorful vegetable broth—a quick and convenient vegan meal that’s also gluten-free.



Beecher's pouches are produced using significantly less water and fossil fuels than standard plastic tubs, and require only one-third the amount of material—yielding almost a 40% reduction in greenhouse gas emissions.

16 OZ FROZEN/SLACK MULTI-SERVE (SERVES 2)

UPC CODE: 7-82045-10084-5

ITEM CODE: 10084 CASE GTIN: 10782045100842

UNIT DIMENSIONS: 5.7" × 2.75" × 8.07"

CASE DIMENSIONS: 14.6" × 7.67" × 8.66"

UNITS/CASE: Eight (8) 16 oz. pouches

CASE CUBE: 0.56 ft³ CASE GROSS WT: 9.5 lb.

CASES/PALLET: 105 TI-HI: 15' × 7'

Nutrition Facts

1 serving per container

Serving Size:
1 package (453g)

Calories **310**
per serving

Amount/Serving	%DV*
Total Fat 8g	10%
Sat. Fat 0.5g	3%
Trans Fat 0g	
Cholest. 0mg	0%
Sodium 1490mg	65%

Amount/Serving	%DV*
Total Carb. 47g	17%
Dietary Fiber 9g	32%
Total Sugars 8g	
Incl. Added Sugars 2g	2%

*The % Daily Value (DV) tells you how much a nutrient in a serving of food contributes to a daily diet. 2,000 calories a day is used for general nutrition advice.

INGREDIENTS: Vegetable stock (water, vegetable stock concentrate [non-GMO potato starch, carrots, salt, cane sugar, celery, onions, onion powder, garlic powder, spices, celery, green peas, spinach, lettuce and/or chicory, red beet]), ground tomatoes (tomatoes, tomato puree, salt), red lentils, onions, lemon juice, contains 2 percent or less of: tomato paste, non-GMO canola oil, cilantro, sea salt, garlic puree, spices, turmeric.



20 OZ FROZEN MULTI-SERVE (SERVES 2-4)

UPC CODE: 7-82045-11774-4

ITEM CODE: 11774

CASE GTIN: 10782045117741

UNIT DIMENSIONS: 5.75" x 2" x 6.25"

CASE DIM.: 12.125" x 8.6875" x 7.1875"

UNITS/CASE: Eight (8) 20 oz. boxes

CASE CUBE: 0.44 ft³ CASE GROSS WT: 10.5 lb. CASES/PALLET: 128 TI-HI: 16" x 8"

INGREDIENTS: Vegetable stock (water, vegetable stock concentrate [non-GMO potato starch, carrots, salt, cane sugar, celery, onions, onion powder, garlic powder, spices, celeriac, green peas, spinach, lettuce and/or chicory, red beet]), ground tomatoes (tomatoes, tomato puree, salt), red lentils, onions, lemon juice, contains 2 percent or less of: tomato paste, non-GMO canola oil, cilantro, sea salt, garlic puree, spices, turmeric.

Nutrition Facts

About 2.5 serv. per container
Serv. Size: 1 cup (245g)

Calories per serving 170

Amount/Serving	%DV*	Amount/Serving	%DV*
Total Fat 4.5g	6%	Total Carb. 25g	9%
Sat. Fat 0g	0%	Dietary Fiber 5g	18%
Trans Fat 0g		Total Sugars 4g	
Cholest. 0mg	0%	Incl. Og Added Sugars	0%
Sodium 810mg	35%	Protein 8g	
Vitamin D 0mcg 0% - Calcium 40mg 4%		Iron 3mg 15% - Potassium 404mg 8%	

*The % Daily Value (DV) tells you how much a nutrient in a serving of food contributes to a daily diet. 2,000 calories a day is used for general nutrition advice.

4 LB FOOD SERVICE (SERVINGS VARY)

UPC CODE: 7-82045-11776-8

ITEM CODE: 11776

CASE GTIN: 10782045117765

UNIT DIMENSIONS: 11" x 9.8" x 1.2"

CASE DIMENSIONS: 8.62" x 11.81" x 12.8"

UNITS/CASE: Six (6) 4 lb. bags

CASE CUBE: 0.75 ft³ CASE GROSS WEIGHT: 25.03 lb. CASES/PALLET: 104 TI-HI: 13" x 8"

INGREDIENTS: Vegetable stock (water, vegetable stock concentrate [non-GMO potato starch, carrots, salt, cane sugar, celery, onions, onion powder, garlic powder, spices, celeriac, green peas, spinach, lettuce and/or chicory, red beet]), ground tomatoes (tomatoes, tomato puree, salt), red lentils, onions, lemon juice, contains 2 percent or less of: tomato paste, non-GMO canola oil, cilantro, sea salt, garlic puree, spices, turmeric.

Nutrition Facts

Servings: Varied
Serv. Size: 1 cup (245g)

Calories per serving 170

Amount/Serving	%DV*	Amount/Serving	%DV*
Total Fat 4.5g	6%	Total Carb. 25g	9%
Sat. Fat 0g	0%	Dietary Fiber 5g	18%
Trans Fat 0g		Total Sugars 4g	
Cholest. 0mg	0%	Incl. Og Added Sugars	0%
Sodium 810mg	35%	Protein 8g	
Vitamin D 0mcg 0% - Calcium 40mg 4%		Iron 3mg 15% - Potassium 404mg 8%	

*The % Daily Value (DV) tells you how much a nutrient in a serving of food contributes to a daily diet. 2,000 calories a day is used for general nutrition advice.



GLUTEN FREE



MILK-FREE

CHICKEN & VEGETABLE SOUP

Hearty and savory, with chicken thigh and vegetables boosted with turmeric—an enjoyable, quick and convenient gluten-free meal with exceptional flavor.



Beecher's pouches are produced using significantly less water and fossil fuels than standard plastic tubs, and require only one-third the amount of material—yielding almost a 40% reduction in greenhouse gas emissions.

16 OZ FROZEN/SLACK MULTI-SERVE (SERVES 2)

UPC CODE: 7-82045-10085-2

ITEM CODE: 10085 CASE GTIN: 10782045100859

UNIT DIMENSIONS: 5.7" x 2.75" x 8.07"

CASE DIMENSIONS: 14.6" x 7.67" x 8.66"

UNITS/CASE: Eight (8) 16 oz. pouches

CASE CUBE: 0.56 ft³ CASE GROSS WT: 9.5 lb.

CASES/PALLET: 105 TI-HI: 15' x 7'

Nutrition Facts

1 serving per container

Serving Size:

1 package (453g)

Calories **220**

Amount/Serving %DV*

Total Fat 6g 8%

Sat. Fat 1.5g 8%

Trans Fat 0g

Cholest. 105mg 35%

Sodium 1870mg 81%

Vitamin D 0mcg 0%

Iron 2mg 10%

Amount/Serving %DV*

Total Carb. 16g 6%

Dietary Fiber 3g 11%

Total Sugars 4g

Incl. Added Sugars 0%

Protein 24g

Calcium 64mg 4%

Potassium 530mg 10%

*The % Daily Value (DV) tells you how much a nutrient in a serving of food contributes to a daily diet. 2,000 calories a day is used for general nutrition advice.

INGREDIENTS: Vegetable stock (water, vegetable stock concentrate [non-GMO potato starch, carrots, salt, cane sugar, celery, onions, onion powder, garlic powder, spices, celeriac, green peas, spinach, lettuce and/or chicory, red beet]), chicken thigh meat, red onion, carrots, celery, contains 2 percent or less of: shallots, seasoning (salt, spices, paprika, granulated garlic), white wine vinegar (sulphites), non-GMO corn masa flour (yellow corn, hydrated lime), rice starch, non-GMO canola oil, garlic puree, oregano, thyme, turmeric, bay leaves.



20 OZ FROZEN MULTI-SERVE (SERVES 2-4)

UPC CODE: 7-82045-11773-7

ITEM CODE: 11773

CASE GTIN: 10782045117734

UNIT DIMENSIONS: 5.75" x 2" x 6.25"

CASE DIM.: 12.125" x 8.6875" x 7.1875"

UNITS/CASE: Eight (8) 20 oz. boxes

CASE CUBE: 0.44 ft³ CASE GROSS WT: 10.5 lb. CASES/PALLET: 128 TI-HI: 16' x 8'

INGREDIENTS: Vegetable stock (water, vegetable stock concentrate [non-GMO potato starch, carrots, salt, cane sugar, celery, onions, onion powder, garlic powder, spices, celeriac, green peas, spinach, lettuce and/or chicory, red beet]), chicken thigh meat, red onion, carrots, celery, contains 2 percent or less of: shallots, seasoning (salt, spices, paprika, granulated garlic), white wine vinegar (sulphites), non-GMO corn masa flour (yellow corn, hydrated lime), rice starch, non-GMO canola oil, garlic puree, oregano, thyme, turmeric, bay leaves.

Nutrition Facts

About 25 serv. per container
Serv. Size: 1 cup (245g)

Calories per serving 120

Amount/Serving	%DV*	Amount/Serving	%DV*
Total Fat 3.5g	4%	Total Carb. 8g	3%
Sat. Fat 1g	5%	Dietary Fiber 2g	7%
Trans Fat 0g		Total Sugars 2g	
Cholest. 55mg	18%	Incl. Og Added Sugars 0%	
Sodium 1010mg	44%	Protein 13g	
Vitamin D 0mcg 0%		Calcium 34mg 2%	
Iron 1mg 6%		Potassium 286mg 6%	

*The % Daily Value (DV) tells you how much a nutrient in a serving of food contributes to a daily diet. 2,000 calories a day is used for general nutrition advice.

4 LB FOOD SERVICE (SERVINGS VARY)

UPC CODE: 7-82045-11777-5

ITEM CODE: 11777

CASE GTIN: 10782045117772

UNIT DIMENSIONS: 11" x 9.8" x 1.2"

CASE DIMENSIONS: 8.62" x 11.81" x 12.8"

UNITS/CASE: Six (6) 4 lb. bags

CASE CUBE: 0.75 ft³ CASE GROSS WEIGHT: 25.03 lb. CASES/PALLET: 104 TI-HI: 13' x 8'

INGREDIENTS: Vegetable stock (water, vegetable stock concentrate [non-GMO potato starch, carrots, salt, cane sugar, celery, onions, onion powder, garlic powder, spices, celeriac, green peas, spinach, lettuce and/or chicory, red beet]), chicken thigh meat, red onion, carrots, celery, contains 2 percent or less of: shallots, seasoning (salt, spices, paprika, granulated garlic), white wine vinegar (sulphites), non-GMO corn masa flour (yellow corn, hydrated lime), rice starch, non-GMO canola oil, garlic puree, oregano, thyme, turmeric, bay leaves.

Nutrition Facts

Servings: Varied
Serv. Size: 1 cup (245g)

Calories per serving 120

Amount/Serving	%DV*	Amount/Serving	%DV*
Total Fat 3.5g	4%	Total Carb. 8g	3%
Sat. Fat 1g	5%	Dietary Fiber 2g	7%
Trans Fat 0g		Total Sugars 2g	
Cholest. 55mg	18%	Incl. Og Added Sugars 0%	
Sodium 1010mg	44%	Protein 13g	
Vitamin D 0mcg 0%		Calcium 34mg 2%	
Iron 1mg 6%		Potassium 286mg 6%	

*The % Daily Value (DV) tells you how much a nutrient in a serving of food contributes to a daily diet. 2,000 calories a day is used for general nutrition advice.



GLUTEN FREE



MILK-FREE

PORK VERDE SOUP

This robust and complex soup is full of tender pork, chiles and tomatillos—an enjoyable, quick and convenient gluten-free meal with exceptional flavor.



Beecher's pouches are produced using significantly less water and fossil fuels than standard plastic tubs, and require only one-third the amount of material—yielding almost a 40% reduction in greenhouse gas emissions.

16 OZ FROZEN/SLACK MULTI-SERVE (SERVES 2)

UPC CODE: 7-82045-10086-9

ITEM CODE: 10086 CASE GTIN: 10782045100866

UNIT DIMENSIONS: 5.7" x 2.75" x 8.07"

CASE DIMENSIONS: 14.6" x 7.67" x 8.66"

UNITS/CASE: Eight (8) 16 oz. pouches

CASE CUBE: 0.56 ft³ CASE GROSS WT: 9.5 lb.

CASES/PALLET: 105 TI-HI: 15' x 7'

Nutrition Facts

1 serving per container

Serving Size:
1 package (453g)

Calories 280
per serving

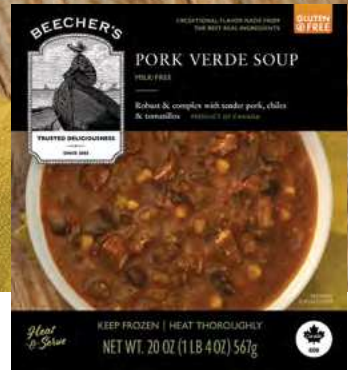
Amount/Serving	%DV*
Total Fat 11g	14%
Sat. Fat 2.5g	13%
Trans Fat 0g	
Cholest. 40mg	13%
Sodium 2400mg	104%

Amount/Serving	%DV*
Total Carb. 32g	12%
Dietary Fiber 8g	29%
Total Sugars 8g	
Incl. To Added Sugars	2%
Protein 17g	

Vitamin D 0mcg	0%	Calcium 56mg	4%
Iron 2mg	10%	Potassium 824mg	20%

*The % Daily Value (DV) tells you how much a nutrient in a serving of food contributes to a daily diet. 2,000 calories a day is used for general nutrition advice.

INGREDIENTS: Vegetable stock (water, vegetable stock concentrate [non-GMO potato starch, carrots, salt, cane sugar, celery, onions, onion powder, garlic powder, spices, celeriac, green peas, spinach, lettuce and/or chicory, red beet]), tomatillos, pork (pork, seasoning [dehydrated garlic, spices, salt, dehydrated onion, high oleic sunflower oil], sea salt, smoked paprika, spices), onions, poblano peppers, corn, contains 2 percent or less of: non-GMO canola oil, non-GMO corn masa flour (yellow corn, hydrated lime), jalapeño peppers, cilantro, green chili peppers (green chili peppers, water, salt, citric acid), lime juice, garlic puree, sea salt, smoked paprika, spices, parsley.



20 OZ FROZEN MULTI-SERVE (SERVES 2-4)

UPC CODE: 7-82045-10068-5

ITEM CODE: 10068

CASE GTIN: 10782045100682

UNIT DIMENSIONS: 5.75" x 2" x 6.25"

CASE DIM.: 12.125" x 8.6875" x 7.1875"

UNITS/CASE: Eight (8) 20 oz. boxes

CASE CUBE: 0.44 ft³ CASE GROSS WT: 10.5 lb. CASES/PALLET: 128 TI-HI: 16' x 8'

INGREDIENTS: Vegetable stock (water, vegetable stock concentrate [non-GMO potato starch, carrots, salt, cane sugar, celery, onions, onion powder, garlic powder, spices, celeriac, green peas, spinach, lettuce and/or chicory, red beet]), tomatillos, pork (pork, seasoning [dehydrated garlic, spices, salt, dehydrated onion, high oleic sunflower oil], sea salt, smoked paprika, spices), onions, poblano peppers, corn, contains 2 percent or less of: non-GMO canola oil, non-GMO corn masa flour (yellow corn, hydrated lime), jalapeño peppers, cilantro, green chili peppers (green chili peppers, water, salt, citric acid), lime juice, garlic puree, sea salt, smoked paprika, spices, parsley.

Nutrition Facts

About 25 serv. per container
Serv. Size: 1 cup (245g)

Calories 150
 per serving

Amount/Serving	%DV*	Amount/Serving	%DV*
Total Fat 6g	8%	Total Carb. 17g	6%
Sat. Fat 1.5g	8%	Dietary Fiber 4g	14%
Trans Fat 0g		Total Sugars 4g	
Cholest. 20mg	7%	Incl. to Added Sugars 2%	
Sodium 1290mg	56%	Protein 9g	

Vitamin D 0mcg 0% • Calcium 30mg 2%
 Iron 1mg 6% • Potassium 445mg 10%

*The % Daily Value (DV) tells you how much a nutrient in a serving of food contributes to a daily diet. 2,000 calories a day is used for general nutrition advice.

4 LB FOOD SERVICE (SERVINGS VARY)

UPC CODE: 7-82045-10080-7

ITEM CODE: 10080

CASE GTIN: 10782045100804

UNIT DIMENSIONS: 11" x 9.8" x 1.2"

CASE DIMENSIONS: 8.62" x 11.81" x 12.8"

UNITS/CASE: Six (6) 4 lb. bags

CASE CUBE: 0.75 ft³ CASE GROSS WEIGHT: 25.03 lb. CASES/PALLET: 104 TI-HI: 13' x 8'

INGREDIENTS: Vegetable stock (water, vegetable stock concentrate [non-GMO potato starch, carrots, salt, cane sugar, celery, onions, onion powder, garlic powder, spices, celeriac, green peas, spinach, lettuce and/or chicory, red beet]), tomatillos, pork (pork, seasoning [dehydrated garlic, spices, salt, dehydrated onion, high oleic sunflower oil], sea salt, smoked paprika, spices), onions, poblano peppers, corn, contains 2 percent or less of: non-GMO canola oil, non-GMO corn masa flour (yellow corn, hydrated lime), jalapeño peppers, cilantro, green chili peppers (green chili peppers, water, salt, citric acid), lime juice, garlic puree, sea salt, smoked paprika, spices, parsley.

Nutrition Facts

Servings: Varied
Serv. Size: 1 cup (245g)

Calories 150
 per serving

Amount/Serving	%DV*	Amount/Serving	%DV*
Total Fat 6g	8%	Total Carb. 17g	6%
Sat. Fat 1.5g	8%	Dietary Fiber 4g	14%
Trans Fat 0g		Total Sugars 4g	
Cholest. 20mg	7%	Incl. to Added Sugars 2%	
Sodium 1290mg	56%	Protein 9g	

Vitamin D 0mcg 0% • Calcium 30mg 2%
 Iron 1mg 6% • Potassium 445mg 10%

*The % Daily Value (DV) tells you how much a nutrient in a serving of food contributes to a daily diet. 2,000 calories a day is used for general nutrition advice.

PRODUCT INDEX

CHEESE

BLOCKS (40 LB)

Dulcet, 16
Extra-Aged Flagship, 6
Flagship, 4
Hatch Jack, 14
Jerk Spice, 10
Just Jack, 12
Marco Polo, 8
Smoked Flagship, 7

CLOTHBOUND TRUCKLES (16 LB)

Flagsheep, 18
Flagship Reserve, 17
Marco Polo Reserve, 20
SheepSheep, 19
Yule Käse, 21

CHEESE CURDS (5 OZ)

Marinated Peppers, 25
Market Herb, 24
Plain, 23

CHEESE CURDS (FOOD SERVICE)

Plain, 23

EXACT WEIGHT TRIANGLES (3.75 OZ)

Flagship, 5
Hatch Jack, 15
Jerk Spice, 11
Just Jack, 13
Marco Polo, 9

EXACT WEIGHT TRIANGLES (6 OZ)

Flagship, 5
Jerk Spice, 11
Marco Polo, 9

RANDOM WEIGHT TRIANGLES (6–8 OZ)

Dulcet, 16
Extra-Aged Flagship, 6
Flagsheep, 18
Flagship, 5
Flagship Reserve, 17
Hatch Jack, 15
Jerk Spice, 11
Just Jack, 13
Marco Polo, 9
Marco Polo Reserve, 20
SheepSheep, 19
Smoked Flagship, 7
Yule Käse, 21

LOAVES (5 LB)

Dulcet, 16
Extra-Aged Flagship, 6
Flagship, 4
Jerk Spice, 10
Just Jack, 12
Marco Polo, 8
Smoked Flagship, 7

SLICED (7 OZ)

Just Jack, 32

SLICED (FOOD SERVICE)

Just Jack, 32

STICKS (8-PACK)

Flagship, 27
Just Jack, 31
Marco Polo, 29

STICKS (24-PACK)

Flagship, 27
Just Jack, 31
Marco Polo, 29

STICKS (FOOD SERVICE)

Flagship, 23

CRACKERS

BAGS (5 OZ)

Flagship Cheese Crackers, 36
Honey Oat Crackers, 37
Original Crackers, 34

FOOD SERVICE

Original Crackers, 35

FOOD SERVICE

CHEESE

Plain Cheese Curds, 23
Flagship Cheese Sticks, 27
Just Jack Sliced Cheese, 32

CRACKERS

Original Crackers, 35

ENTRÉES

“World’s Best” Mac &
Cheese, 41

SAUCES

Flagship Sauce, 62

SOUPS

Chicken & Vegetable Soup, 71
Pork Verde Soup, 73
Red Lentil Soup, 69
Smoky Cauliflower Bisque, 67
Tomato Cheddar Soup, 65

GLUTEN FREE

ENTRÉES + SIDES

Gluten Free Cheese Curd Lasagna, 49
Gluten Free “World’s Best” Mac & Cheese, 42, 59
Street Corn, 56

SOUPS

Chicken & Vegetable Soup, 70–71
Pork Verde Soup, 72–73
Red Lentil Soup, 68–69
Smoky Cauliflower Bisque, 66–67
Tomato Cheddar Soup, 64–65

KOSHER

Flagship Cheese Crackers, 36
Honey Oat Crackers, 37
Original Crackers, 34–35

MILK-FREE

Chicken & Vegetable Soup, 70–71
Pork Verde Soup, 72–73
Red Lentil Soup, 68–69

PASTA ENTRÉES

FOOD SERVICE

“World’s Best” Mac & Cheese, 41

MULTI-SERVE

Baked Ziti, 53
Broccoli Mac & Cheese, 45
Cheese Curd Lasagna, 48
Cheese Curd Lasagna with Meat Sauce, 50–51
Gluten Free Cheese Curd Lasagna, 49

Gluten Free “World’s Best” Mac & Cheese, 42
Hatch Chile Mac & Cheese, 44
Mariachi Mac & Cheese, 46
Pasta Bolognese, 52
Penne alla “Vodka” Sauce with Cauliflower, 47
Smoked Flagship Mac & Cheese, 43
“World’s Best” Mac & Cheese, 40–41

SINGLE SERVE

Cacio e Pepe, 57
Cheese Curd Lasagna, 60
Cheese Curd Lasagna with Meat Sauce, 61
Gluten Free “World’s Best” Mac & Cheese, 59
“World’s Best” Mac & Cheese, 58

SAUCES

Flagship Sauce, 62

SOUPS

FOOD SERVICE

Chicken & Vegetable Soup, 71
Pork Verde Soup, 73
Red Lentil Soup, 69
Smoky Cauliflower Bisque, 67
Tomato Cheddar Soup, 65

FROZEN/SLACK (16 OZ POUCH)

Chicken & Vegetable Soup, 70
Pork Verde Soup, 72
Red Lentil Soup, 68
Smoky Cauliflower Bisque, 66
Tomato Cheddar Soup, 64

FROZEN (20 OZ BOX)

Chicken & Vegetable Soup, 71

Pork Verde Soup, 73
Red Lentil Soup, 69
Smoky Cauliflower Bisque, 67
Tomato Cheddar Soup, 65

VEGAN

Red Lentil Soup, 68–69

VEGETABLE SIDES

Broccoli in Cheese Sauce, 54
Cauliflower in Cheese Sauce, 55
Street Corn, 56

VEGETARIAN

ENTRÉES + SIDES

Baked Ziti, 53
Broccoli in Cheese Sauce, 54
Broccoli Mac & Cheese, 45
Cacio e Pepe, 57
Cauliflower in Cheese Sauce, 55
Cheese Curd Lasagna, 48, 60
Gluten Free Cheese Curd Lasagna, 49
Gluten Free “World’s Best” Mac & Cheese, 42, 59
Hatch Chile Mac & Cheese, 44
Mariachi Mac & Cheese, 46
Penne alla “Vodka” Sauce with Cauliflower, 47
Smoked Flagship Mac & Cheese, 43
Street Corn, 56
“World’s Best” Mac & Cheese, 40–41, 58

SOUPS

Red Lentil Soup, 68–69
Smoky Cauliflower Bisque, 66–67
Tomato Cheddar Soup, 64–65



AWARD WINNERS

Since Beecher's first opened in 2003, our cheesemakers have worked exceptionally hard to elevate the quality and flavor of our cheeses—winning dozens of awards and proving the test of time and craft. These are the honors we earned in 2024.

FLAGSHIP RESERVE

2024 American Cheese Society, Best of Show

2024 American Cheese Society, First Place

2024 World Cheese Awards, Bronze

2024 World Championship Cheese Contest, Gold

FLAGSHOOP

2024 World Cheese Awards, Silver

2024 World Championship Cheese Contest, Gold

MARCO POLO RESERVE

2024 World Cheese Awards, Gold

2024 American Cheese Society, Third Place

EXTRA-AGED FLAGSHIP

2024 American Cheese Society, First Place

PLAIN CHEESE CURDS

2024 American Cheese Society, Second Place





BEECHER'S

BEECHER'S HANDMADE CHEESE

1725 Westlake Ave N, Suite 200; Seattle, WA 98109

wholesale@beecherscheese.com

@BEECHERSCHEESE | WHOLESAL.BEECHERSCHEESE.COM

